


INVICTA
Movement Caliber
NH35

Movement Caliber : NH35
Presentation

Display Elements

Minute Hand

Hour Hand

Second Hand

Day



Crown Positions:

1. Normal position
2. Quick correction of date
3. Setting of hour, minute, date

Movement Caliber : NH35

Setting

Setting the Time

- 1.1 Pull the crown to position 3.
- 1.2 Turn the crown to set hour/ minute hands to the desired time.
- 1.3 Push the crown back to position 1.



Movement Caliber : NH35

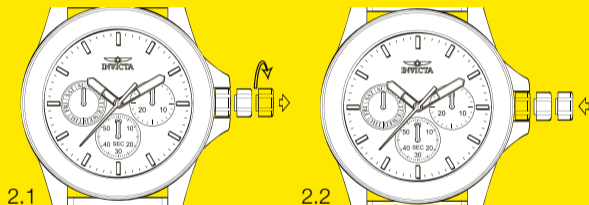
Setting

Setting the Date

- 2.1 Pull the crown to position 2.
- 2.2 Turn the crown clockwise step-by-step to the desired date
- 2.3 Push the crown back to position 1.

!!Attention!!

Please Do Not set between 21:00 and 4:00 as this will cause a malfunction.



Movement Caliber : NH35

Setting

To wind up the Mainspring

Manual Winding

- Rotate the crown clockwise at normal position.
- Wind turning the ratchet wheel screw 8 times. It will start to move naturally after shaking slightly.

Wind up by machine

- Full wind up conditions
Rotary speed: 30 rpm
Operating time: 60 rpm

