

Welcome
to the club
of dedicated
Invicta collectors.



INVICTA

Smarter by the Second.



The Invicta
Russian Diver Quinotaur
Skeleton Mechanical

A journey of unimagined substance and innovation awaits you. With over 20 collections from which to select, the world of Invicta Watch delivers the ultimate in technical achievement along with a diversity in style unmatched in today's market. Cutting-edge craftsmanship expressed through ingenious designs has seamlessly turned fans into dedicated collectors.

Always on a mission to advance & perfect, Invicta continually pushes past barriers delivering watches that have made Invicta the masters of case complications and a dream come true for the collector. The engineering and design elements that go into each case must integrate flawlessly with the movement powering the watch that is inside that case. In essence, the more complications, the more difficult it is to design and assemble a timepiece but Invicta has taken this art to a masterful level bringing forth timepieces of inspired exception. The expert, hands-on, detailed approach to watch-making is an intrinsic aspect to the range of capability demonstrated in each Invicta timepiece.

The Invicta collector can build a bold, diverse collection comprised of the optimum in technology and design in a spirit defined only by Invicta Watch.



The Invicta Pro Diver Sport Chrono



Plunge into any horizon using the steadfast guidance of the Invicta Pro Diver. Stylishly classic, internal workings are forged with variations of either Swiss chronograph or 21-jewel automatic movements and willingly navigate in depths up to 300 meters. Built with confident prowess, the fortitude with which these timepieces function makes the Pro Diver the quintessential in performance.

INVICTA
PRO DIVER

MASTER OF THE OCEANS

The Invicta Pro Diver Sport Chrono



Invicta Pro Diver Sea Hunter Sport





Invicta Pro Diver Sea Hunter Classic Auto Reserve

A new masterpiece in timing has joined the ranks of the Pro Diver collection: the Invicta Sea Hunter. Prominently sized and ready to face depths up to 300 meters, the Invicta Sea Hunter arrives with a visionary purpose prepared to handle any level of intensity. Emboldened by Swiss-Made technical systems geared for the ultimate time mobility and function. Not for the faint of heart, the fierce volume and capability of the Sea Hunter pushes past barriers, delivering an unparalleled standard.

INVICTA
PRO DIVER

SEA HUNTER
MASTER OF THE OCEANS






INVICTA
RUSSIAN
1959 DIVER
SINCE 1939
BETWEEN THE DEVIL AND THE DEEP BLUE SEA
COME HELL OR HIGH WATER

Invicta Russian Diver Camo Siberian Tiger

Originally created to honor the 1959 watch commissioned by the Russian Naval fleet, Invicta's Russian Diver commands attention. Striking in size with its complimenting signature crown cap and surgical stainless steel or titanium construction, the Russian Diver is the definition of bold. Evolving to accommodate demand, these patented designs now include models fit for any woman's bidding. Equally comfortable scaling heights of adventure or arriving for dinner, the Russian Diver is never in doubt and will always be at the ready to fulfill any mission.



The Invicta Russian Diver
Camo Tsunami Warrior



The Invicta Subaqua NOMA III Dragon Sport Swiss Chrono

The advertisement is split into two vertical panels. The left panel features a close-up of an Invicta Subaqua watch with a black dial and a rotating bezel, set against a background of blue water with bubbles. The right panel shows a woman with short blonde hair wearing a gold watch, lying on a yellow patterned surface.

INVICTA
SUBAQUA
BEST UNDER PRESSURE

Led with expert engineering, and always ready to face the depths, no feat or occasion will ever be too great for Invicta's Subaqua to handle. The sheer magnitude of this mighty timepiece is superbly executed with surgical-grade solid stainless steel, Swiss automatic movements, and multiple color options of ionic plating. Managing up to 500 meters of water, finished off with a unidirectional rotating bezel, integrated shock resistance, and Invicta's luminous Tritnite® hands, the Subaqua is the diver definitive in negotiating any adventure by sea or by land.

The Invicta Subaqua NOMA III Dragon GMT

The Invicta Armory II Swiss Chrono

INVICTA

ARMORY

AN ARSENAL OF THE HIGHEST CALIBER





The Invicta Reserve Scuba Swiss Chrono



The exceptional taste and distinguished palate of the connoisseur will discover timeless pleasure within the Invicta Reserve Collection. Specially developed for those in the know, the Reserve Collection is a reinvention of the superb to create the ultimate in horological finery. These limited quantity; exclusively hand-made timepieces represent a pinnacle in superiority for the discerning aficionado.

The Invicta Reserve Scuba Swiss Chrono



INVICTA
RESERVE

FOR THE FEW WHO KNOW BEST



The Invicta Bolt Classic
Swiss Chrono Reserve

With sharpness in attitude and ability, the Invicta Bolt is a mastermind of dominance. Perfectly synchronized movements, complex casing engineering with the addition of textured screw-down crowns and pushers. Signature rope jewelry design fastened around the bezel by steel anchors or incorporated into the case complication. Variations in materials and finishes provide a range of options to suit any taste. Power becomes harmonized motion and expertise strikes at the perfect moment. The Invicta Bolt, an uncompromised statement in accomplished timekeeping.

INVICTA

BOLT

A NAUTICAL ENSEMBLE



The Invicta Coalition Forces Swiss Auto
Limited Collector Edition

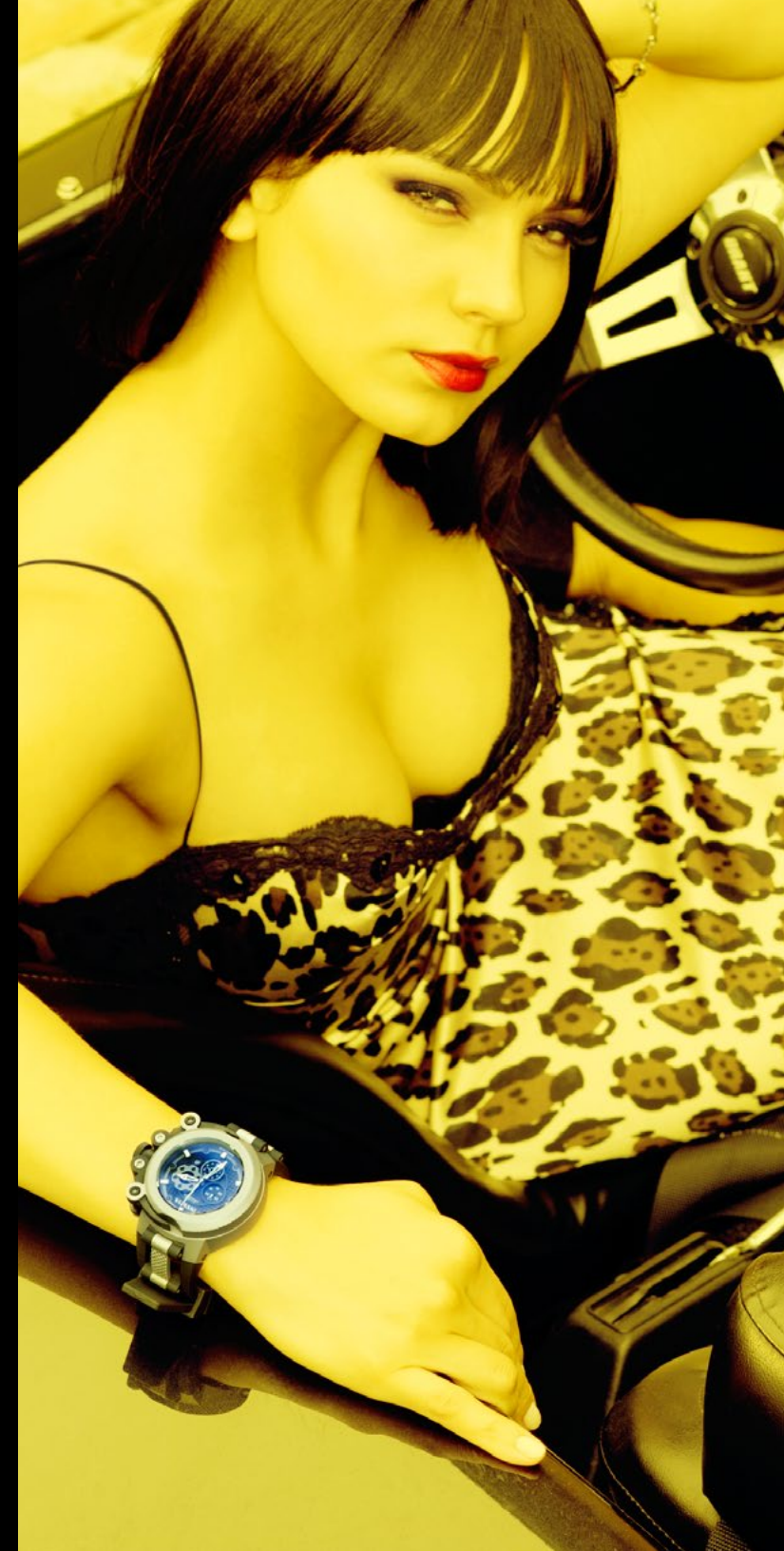




**The Invicta Coalition Forces
Trigger Swiss Chrono**

Covert operations are revealed as Invicta's stealth Coalition Forces Collection steps into the fore. Conditioned to handle the most sophisticated of endeavors, the Coalition Forces are at the ready, available for the day-to-day maneuvers to come. Strategically prepared for all operatives, this technically deft collection is crafted with Swiss movements and emboldened with the attributes of true leadership. Invicta's Coalition Forces Collection reaches the front line with the command, range and tactics for decisive action, turning time into a multifaceted vision quest.


INVICTA
COALITION
FORCES
FIELD TESTED





Touring Edition

S1

TACHYMETER

S1

4



The Invicta S1 Touring Edition Swiss Chrono

The S1 Rally is waiting to be taken out for a serious spin. At Invicta we know to cruise in the fast lane means to live in a world where a moment in time can determine ultimate glory. Look no further than an S1 timepiece to mark each second with precise perfection. This fully developed racing series is emboldened by features including Swiss movements, stainless steel casing, colored hands and textured dials. The deft S1 Rally will clock life's mileage both off and on the track.



GOING THE DISTANCE



The Invicta Akula Classic
Swiss Chrono Reserve



From out of Reserve, the vast power of the Invicta Akula demanded a collection all its own. This professional Swiss made chronograph is armed with 52mm solid stainless casing, date display, the engraved Reserve logo black ionic plating, and an anti-reflective sapphire crystal to name but just a few of its attributes. The intensely popular Akula forged its mighty way forward loaded with the power and the looks to fully submerge you into the depths and caverns of your most bold mission.

INVICTA
AKULA
RESERVE
FOR THE FEW WHO KNOW BEST






INVICTA
Smarter by the Second.

Visit us at www.invictawatch.com
and join the conversation on **facebook**