



INVICTA
CALENDAR 2016



2016



The Invicta Subaqua NOMA III. Model 0736. Movement: Professional Swiss Quartz. **Case and Dial:** 50mm. Solid Stainless Steel Case with black ion plating. Unidirectional rotating bezel. Stainless steel screw-down crown in black IP. Flame fusion crystal. Tritnite luminous hands and hour markers. Date display. **Band:** High grade polyurethane band with stainless steel inserts. Stainless steel buckle with logo and black ion plating. **Water Resistance:** 500 meters.

January
2016

Fri	Sat	Sun	Mon	Tue	Wed	Thu	Fri	Sat	Sun	Mon	Tue	Wed	Thu	Fri	Sat	Sun	Mon	Tue	Wed	Thu	Fri	Sat	Sun							
1	2	3	4	5	6	7	8	9	10	11	12	13	14	15	16	17	18	19	20	21	22	23	24	25	26	27	28	29	30	31



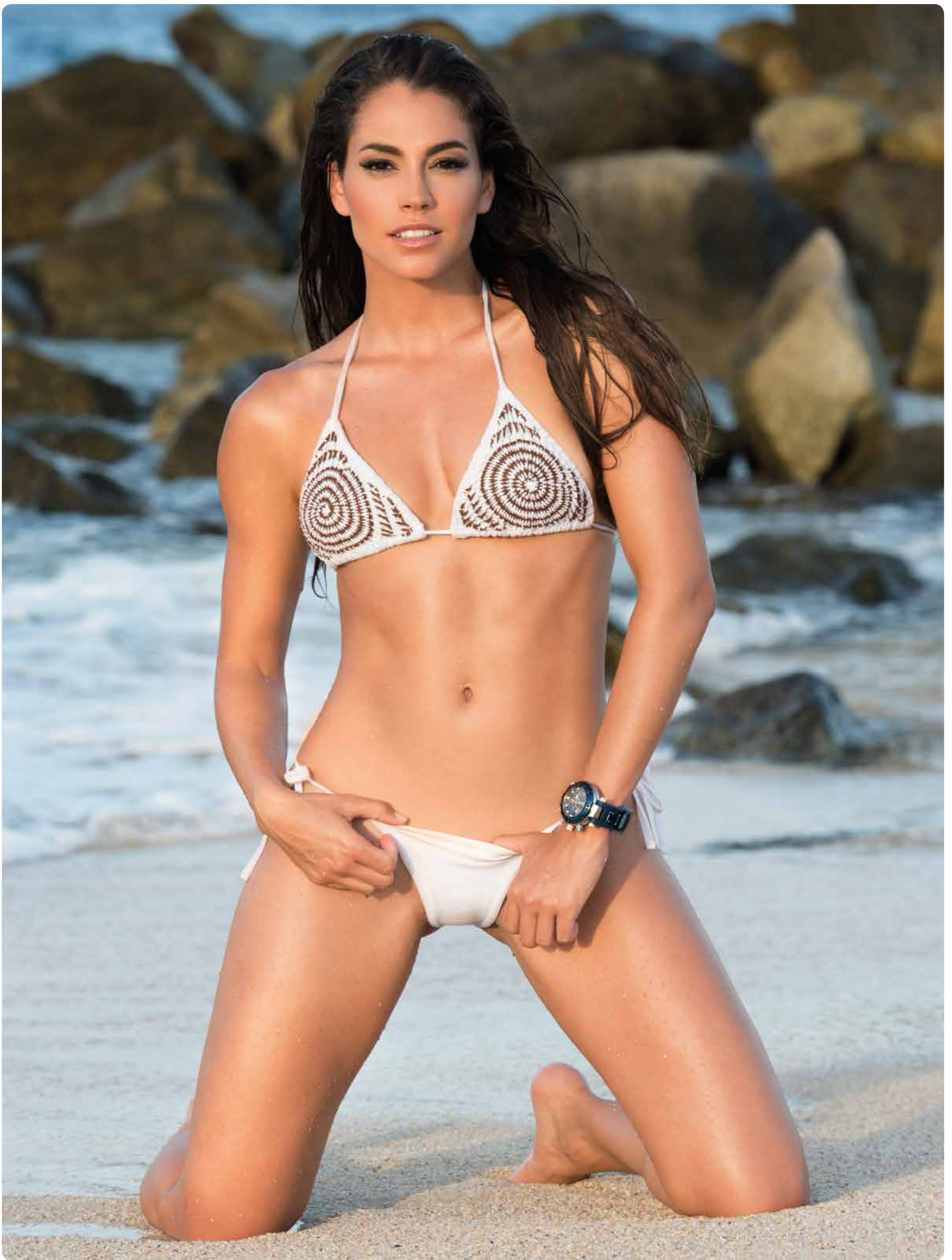
The Invicta Pro Diver. Model 18741. Movement: Professional Far East Quartz. **Case and Dial:** 50mm. Solid Stainless Steel Case with black ion plating. Unidirectional rotating bezel. Stainless steel push and pull crown. Flame Fusion crystal. Tritnite luminous hands and hour markers. **Band:** High grade Silicone. Stainless steel buckle with logo. **Water Resistance:** 100 meters.

February	Mon	Tue	Wed	Thu	Fri	Sat	Sun	Mon	Tue	Wed	Thu	Fri	Sat	Sun	Mon	Tue	Wed	Thu	Fri	Sat	Sun	Mon							
2016	1	2	3	4	5	6	7	8	9	10	11	12	13	14	15	16	17	18	19	20	21	22	23	24	25	26	27	28	29



The Invicta Reserve Excursion. Model 18563. Movement: Professional Swiss Quartz. **Case and Dial:** 50mm. Solid Stainless Steel Case with black ion plating. Unidirectional rotating bezel. Stainless steel screw-down crown. Flame fusion crystal. Super-luminous hands. Date, Day, Month display and hour markers. **Band:** High grade polyurethane band. Stainless steel buckle with logo and black ion plating. **Water Resistance:** 200 meters.

March	Tue	Wed	Thu	Fri	Sat	Sun	Mon	Tue	Wed	Thu	Fri	Sat	Sun	Mon	Tue	Wed	Thu	Fri	Sat	Sun	Mon	Tue	Wed	Thu							
2016	1	2	3	4	5	6	7	8	9	10	11	12	13	14	15	16	17	18	19	20	21	22	23	24	25	26	27	28	29	30	31



The Invicta Subaqua Noma I. Model 19588. Movement: Professional Swiss Quartz. **Case and Dial:** 47mm. Solid Stainless Steel Case with black ion plating. Unidirectional rotating bezel. Stainless steel screw-down crown. Flame fusion crystal. Trinite luminous hands and hour markers. Date display. **Band:** High grade polyurethane band. Stainless steel buckle with logo. **Water Resistance:** 500 meters.

April
2016

Fri	Sat	Sun	Mon	Tue	Wed	Thu	Fri	Sat	Sun	Mon	Tue	Wed	Thu	Fri	Sat	Sun	Mon	Tue	Wed	Thu	Fri	Sat							
1	2	3	4	5	6	7	8	9	10	11	12	13	14	15	16	17	18	19	20	21	22	23	24	25	26	27	28	29	30



The Invicta Pro Diver. Model 20208. Movement: Professional Far East Quartz. **Case and Dial:** 38mm. Solid Stainless Steel Case. Unidirectional rotating bezel with black IP. Stainless steel push and pull crown. Mineral crystal. Tritnite luminous hands and hour markers. Date display. **Band:** High grade Silicone. Stainless steel buckle with logo. **Water Resistance:** 300 meters.

May	Sun	Mon	Tue	Wed	Thu	Fri	Sat	Sun	Mon	Tue	Wed	Thu	Fri	Sat	Sun	Mon	Tue	Wed	Thu	Fri	Sat	Sun	Mon	Tue							
2016	1	2	3	4	5	6	7	8	9	10	11	12	13	14	15	16	17	18	19	20	21	22	23	24	25	26	27	28	29	30	31



The Invicta Venom Sea Dragon. Model 19301. Movement: Professional Japanese Automatic. **Case and Dial:** 53.7mm. Solid Stainless Steel Case. Unidirectional rotating bezel with black IP. Stainless steel push and pull crown. Mineral crystal. Tritnite luminous hands and hour markers. Date display. **Band:** High grade Silicone. Stainless steel buckle with logo. **Water Resistance:** 1000 meters.

June
2016

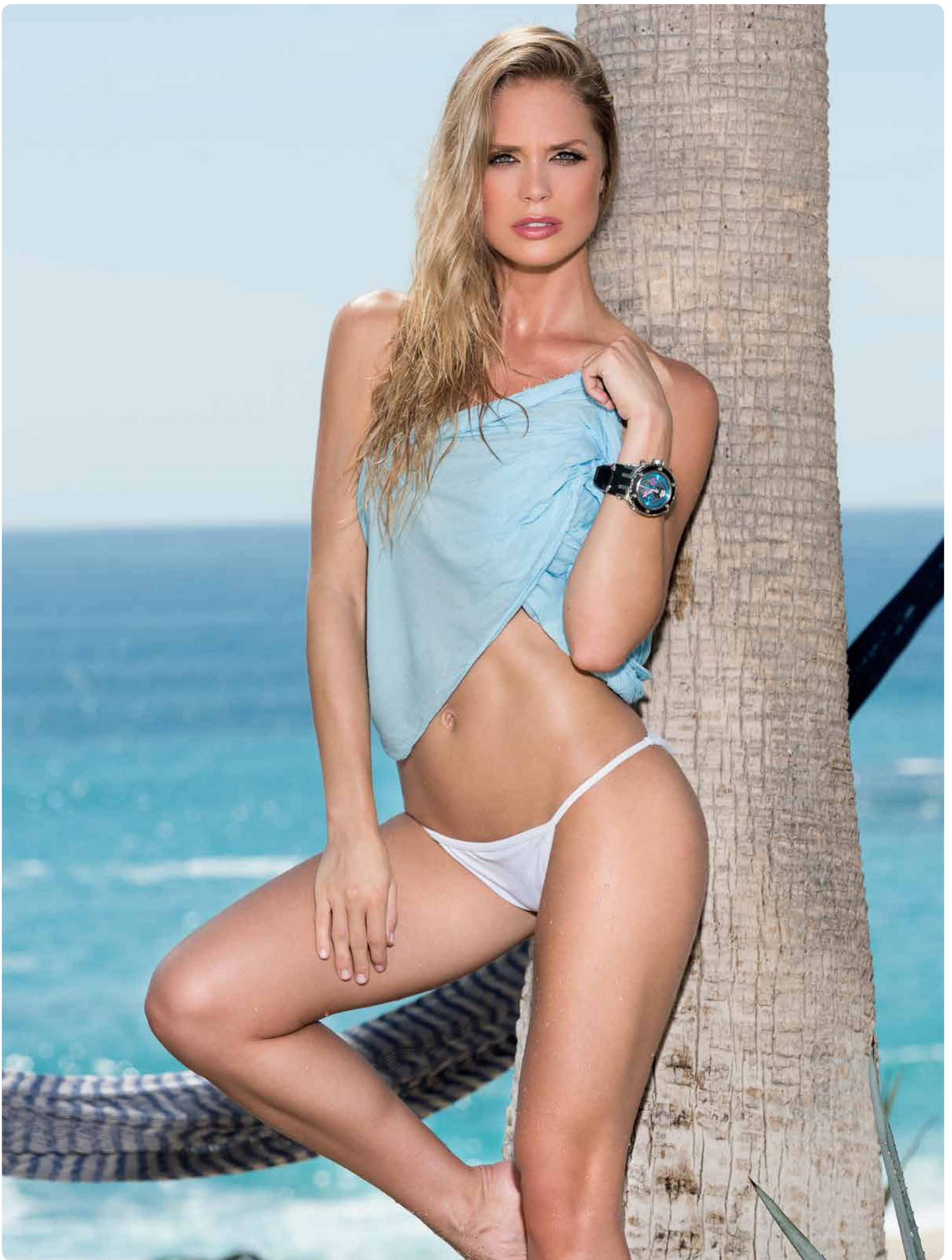
Wed	Thu	Fri	Sat	Sun	Mon	Tue	Wed	Thu	Fri	Sat	Sun	Mon	Tue	Wed	Thu	Fri	Sat	Sun	Mon	Tue	Wed	Thu							
1	2	3	4	5	6	7	8	9	10	11	12	13	14	15	16	17	18	19	20	21	22	23	24	25	26	27	28	29	30



The Invicta Men's Venom. Model 19921. Movement: Professional Swiss Chronograph. **Case and Dial:** 53.7mm. Solid Stainless Steel Case. Unidirectional rotating bezel with 18k Rosegold IP. Stainless steel screw-down crown. Flame Fusion crystal. Tritnite luminous hands and hour markers. Date display. **Band:** High grade Silicone. Stainless steel buckle with logo. **Water Resistance:** 1000 meters.

July
2016

Fri	Sat	Sun	Mon	Tue	Wed	Thu	Fri	Sat	Sun	Mon	Tue	Wed	Thu	Fri	Sat	Sun	Mon	Tue	Wed	Thu	Fri	Sat	Sun							
1	2	3	4	5	6	7	8	9	10	11	12	13	14	15	16	17	18	19	20	21	22	23	24	25	26	27	28	29	30	31



The Invicta Reserve Specialty Subaqua. Model 16252. Movement: Professional Swiss Chronograph. **Case and Dial:** 52mm. Solid Stainless Steel Case. Fixed Bezel. Stainless steel screw-down crown and pushers. Flame Fusion crystal. Tritnite luminous hands. Date display. **Band:** High grade polyurethane band. Stainless steel buckle with logo. **Water Resistance:** 500 meters.

**August
2016**

Mon	Tue	Wed	Thu	Fri	Sat	Sun	Mon	Tue	Wed	Thu	Fri	Sat	Sun	Mon	Tue	Wed	Thu	Fri	Sat	Sun	Mon	Tue	Wed							
1	2	3	4	5	6	7	8	9	10	11	12	13	14	15	16	17	18	19	20	21	22	23	24	25	26	27	28	29	30	31



The Invicta Subaqua Noma IV. Model 16146. Movement: Professional Swiss Quartz. **Case and Dial:** 50mm. Solid Stainless Steel Case with rose gold and black ion plating. Unidirectional rotating Bezel. Stainless steel screw-down crown. Flame Fusion crystal. Superluminova hands and hour markers. 30 min display. Band: High grade silicone band with stainless steel inserts. Stainless steel buckle. **Water Resistance:** 500 meters.

September	Thu	Fri	Sat	Sun	Mon	Tue	Wed	Thu	Fri	Sat	Sun	Mon	Tue	Wed	Thu	Fri	Sat	Sun	Mon	Tue	Wed	Thu	Fri							
2016	1	2	3	4	5	6	7	8	9	10	11	12	13	14	15	16	17	18	19	20	21	22	23	24	25	26	27	28	29	30



The Invicta Lady Bolt. Model 18682. Movement: Professional Swiss Quartz Chronograph. **Case and Dial:** 40mm. Solid Stainless Steel Case. Unidirectional rotating Bezel. Stainless steel screw-down crown. Flame Fusion crystal. Superluminova hands and hour markers. Date display. **Band:** High grade Stainless Steel and Silicone band. Stainless steel buckle. **Water Resistance:** 200 meters.

**October
2016**

Sat	Sun	Mon	Tue	Wed	Thu	Fri	Sat	Sun	Mon	Tue	Wed	Thu	Fri	Sat	Sun	Mon	Tue	Wed	Thu	Fri	Sat	Sun	Mon								
	1	2	3	4	5	6	7	8	9	10	11	12	13	14	15	16	17	18	19	20	21	22	23	24	25	26	27	28	29	30	31



The Invicta Coalition Force Grand Octanes. Model 19582. Movement: Professional Swiss Quartz Chronograph. **Case and Dial:** 56mm. Solid Stainless Steel Case with 14K Yellow Gold plating Unidirectional rotating Bezel. Stainless steel screw-down crown. Flame Fusion crystal. Tritnite luminous hands and hour markers. Date display. **Band:** High grade Stainless Steel 14K Yellow Gold plated band. Stainless steel gold plated buckle. **Water Resistance:** 200 meters.

November	Tue	Wed	Thu	Fri	Sat	Sun	Mon	Tue	Wed	Thu	Fri	Sat	Sun	Mon	Tue	Wed	Thu	Fri	Sat	Sun	Mon	Tue	Wed							
2016	1	2	3	4	5	6	7	8	9	10	11	12	13	14	15	16	17	18	19	20	21	22	23	24	25	26	27	28	29	30



The Invicta Subaqua Noma III. Model 19890. **Movement:** Professional Swiss Quartz. **Case and Dial:** 42mm. Solid Stainless Steel Case. Unidirectional rotating Bezel. Stainless steel screw-down crown. Flame Fusion crystal. Tritnite luminous hands and hour markers. Date display. **Band:** High grade genuine leather band. Stainless steel buckle. **Water Resistance:** 500 meters.

December	Thu	Fri	Sat	Sun	Mon	Tue	Wed	Thu	Fri	Sat	Sun	Mon	Tue	Wed	Thu	Fri	Sat	Sun	Mon	Tue	Wed	Thu	Fri	Sat							
2016	1	2	3	4	5	6	7	8	9	10	11	12	13	14	15	16	17	18	19	20	21	22	23	24	25	26	27	28	29	30	31



JANUARY
Model 0736



FEBRUARY
Model 18741



MARCH
Model 18563



APRIL
Model 19588



MAY
Model 20208



JUNE
Model 19301



JULY
Model 19921



AUGUST
Model 16252



SEPTEMBER
Model 16146



OCTOBER
Model 18682



NOVEMBER
Model 19582



DECEMBER
Model 19890



JANUARY
The Invicta Subaqua NOMA III
Model 0736



FEBRUARY
The Invicta Pro Diver
Model 18741



MARCH
The Invicta Reserve Excursion
Model 18563



APRIL
The Invicta Subaqua Noma I
Model 19588



MAY
The Invicta Pro Diver
Model 20208



JUNE
The Invicta Venom Sea Dragon
Model 19301



JULY
The Invicta Venom
Model 19921



AUGUST
The Invicta Reserve Specialty Subaqua
Model 16252



SEPTEMBER
The Invicta Subaqua Noma IV
Model 16146



OCTOBER
The Invicta Lady Bolt
Model 18682



NOVEMBER
The Invicta Coalition Force Grand Octane
Model 19582



DECEMBER
The Invicta Subaqua Noma III
Model 19890