


INVICTA
Movement Caliber
Cal.5030D

INFO

Battery: 395 (diameter 9.5mm x 2.6mm / SR 927 SW) Accuracy: +20 / -10 seconds per month

Movement Caliber : Cal.5030D
Presentation

Display Elements

Minutes Hand

Hour Hand

Day Retrograde

Second Hand

Centre Stop-Second

Minute Counter

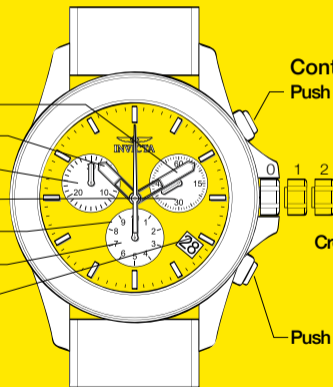
Date

Control Buttons

Push Button A

Crown Positions

Push Button B



Movement Caliber : Cal.5030D

Setting

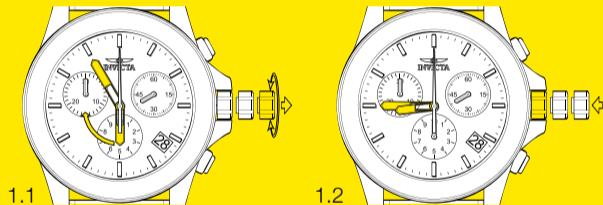
Setting the Time

- ➊ Pull out the crown to position 3 (the watch stops).*
- ➋ Turn the crown until you reach the correct time 8:45.
- ➌ Push the crown back into position 1.*

Please note:

* In order to set the time to the exact second, ➊ must be pulled out when the second hand is in position «60».

Once the hour and minute hands have been set, ➌ must be pushed back into position 1 at the exact second.



Movement Caliber : Cal.5030D

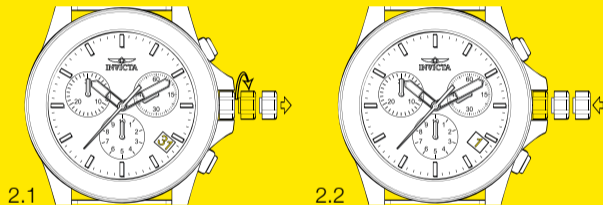
Setting

Setting the Date (Quick Mode)

- 1 Pull out the crown to position 1 (the watch continues to run).
- 2 Turn the crown until the correct date 1 appears.
- 3 Push the crown back into position 0.

Please note:

During the date changing phase between approx. 9pm and 12pm; the date must be set to the date of the following day.



Movement Caliber : Cal.5030D

Setting

Setting the Date / Time

Example:

-Date / time on the watch: 17 / 1:25 AM

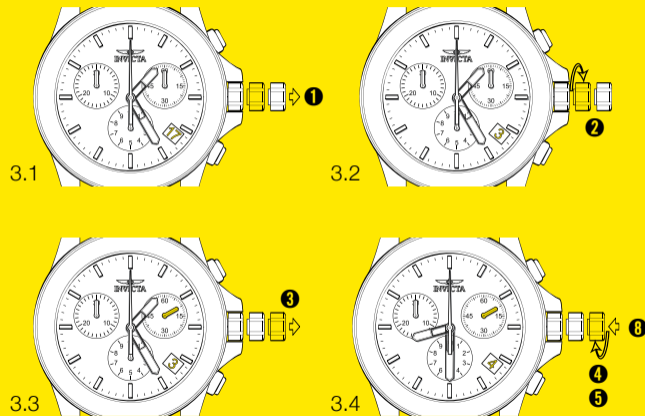
-Present date / time: 4 / 8:30 PM

- 1 Pull out the crown to position 1 (the watch continues to run).
- 2 Turn the crown until yesterday's date appears 3 .
- 3 Pull out the crown to position 2 (the watch stops).*
- 4 Turn the crown until the correct date 4 appears.
- 5 Continue to turn the crown until the correct time 8:30 PM appears.**
- 6 Push the crown back into position 0.

Please note:

* To set your watch to the exact second, please refer to the chapter entitled «setting the time».

** Please observe the AM/PM clock rhythm.



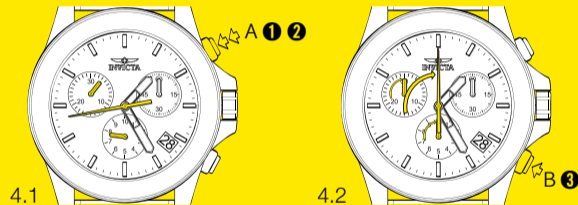
Movement Caliber : Cal.5030D

Functions

Chronograph: Basic Function (Start / Stop / Reset)

Example:

- 1** Start:
Press push button A.
- 2** Stop:
to stop the timing, press push button A once more and read the 3 chronograph counters: 4 min / 38 sek / 7 → 10 sec
- 3** Zero positioning:
Press push button B.
(The 3 chronograph hands will be reset to their zero position).



Movement Caliber : Cal.5030D

Functions

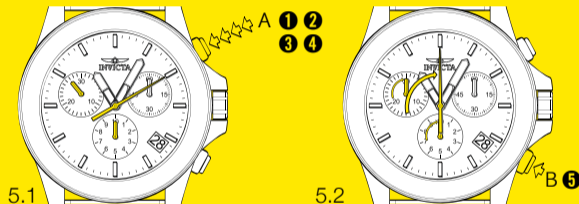
Chronograph: Accumulated Timing

Example:

- 1 Start: (start timing)
- 2 Stop: (e.g. 15 min 5 sec following 1)
- 3 Restart: (timing is resumed)
- 4 Stop: (e.g. 13 min 5 sec following 3)
= 28 min 10 sec (The accumulated measured time is shown)*
- 5 Reset: The 3 chronograph hands are returned to their zero position.

Please note:

* Following 4, the accumulation of the timing can be continued by pressing push button A (Restart / Stop, Restart / Stop, ...)



Movement Caliber : Cal.5030D

Functions

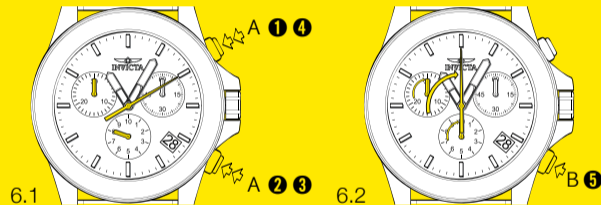
Chronograph: Intermediate or Interval Timing

Example:

- ➊ Start: (start timing)
- ➋ Display interval: e.g. 10 minutes 10 seconds (timing continues in the background)
- ➌ Making up the measured time: (the 3 chronograph hands are quickly advanced to the ongoing measured time).
- ➍ Stop: (Final time is displayed)
- ➎ Reset: The 3 chronograph hands are returned to their zero position

Please note:

* Following ➌, further intervals or intermediates can be displayed by pressing push button B (display interval / make up measured time, ...)



Movement Caliber : Cal.5030D

Functions

Adjusting the Chronograph Hands to Zero Position

Example:

One or several chronograph hands are not in their correct zero position and have to be adjusted (e.g. following a battery change).

- 1 Pull out the crown to position 2 (all 3 chronograph hands are in their correct or incorrect zero position).
- 2 Keep push-buttons A and B depressed simultaneously for at least 2 seconds (the centre stop-second rotates by 360° → corrective mode is activated).

↓ Adjusting the second counter hand

Single step **A** 1 x short; Continuous **A** long; Adjusting the next hand B;

↓ Adjusting the the hour counter hand at 5030.D (position 6h)

Single step **A** 1 x short; Continuous **A** long; Adjusting the next hand B;

↓ Adjusting the 1/10 second counter hand (position 9h)

Single step **A** 1 x short; Continuous **A** long

- 3 Returning the crown to position 0, Termination of the chronograph hands adjustment (can be carried out at any time).

