

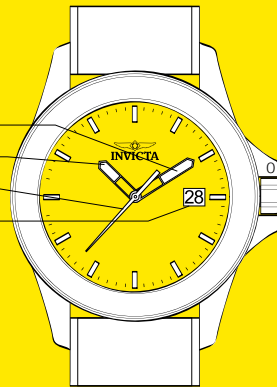


INVICTA
Movement Caliber
2331 / 103

Movement Caliber : 2331 / 103
Presentation

Display Elements

Minute Hand
Hour Hand
Second Hand
Date



Control Buttons

Crown Positions

1. Normal position
2. Quick correction of day / date
3. Correction of hour, minute, day

Movement Caliber : 2331 / 103

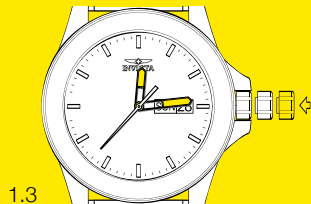
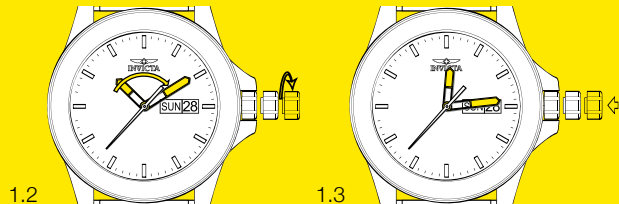
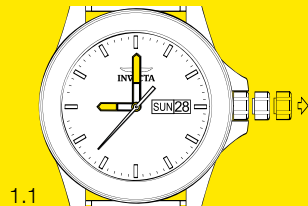
Setting

Setting the Time, Hour and Minute

- 1.1 Pull the crown to position 3.
- 1.2 Turn the crown clockwise to set the hour / minute hands to the desired time.
- 1.3 Push the crown back to position 1.

Note:

70% of power is saved when the crown is pulled out.



Movement Caliber : 2331 / 103

Setting

Quick Change of Date

2.1 Set the crown to position 2.

2.2 Turn the crown clockwise to set the date.

!! Attention !! Never correct date between 10:30pm and 0:00am.

