


INVICTA
Movement Caliber
VD76

Movement Caliber : VD76
Presentation

Display Elements

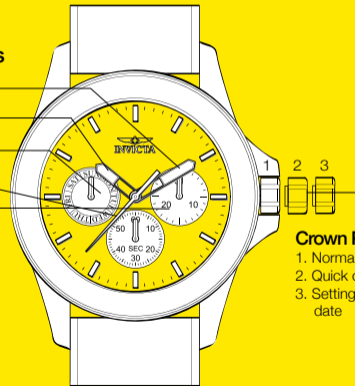
Hour Hand

Minute Hand

Day

Date

Second Hand



Crown Positions:

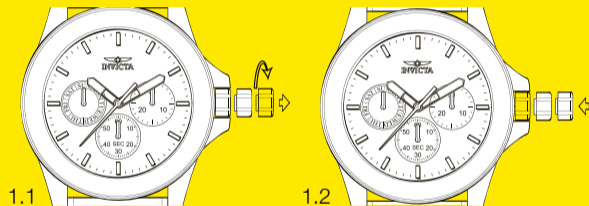
1. Normal position
2. Quick correction of date
3. Setting of hour, minute, date

Movement Caliber : VD76

Setting

Setting the Time

- 1.1 Pull the crown to position 3 when the small second hand is at the 12 o'clock position.
- 1.2 Turn the crown to set hour/ minute hands to the desired time.
- 1.3 Push the crown back to position 1.



Movement Caliber : VD76

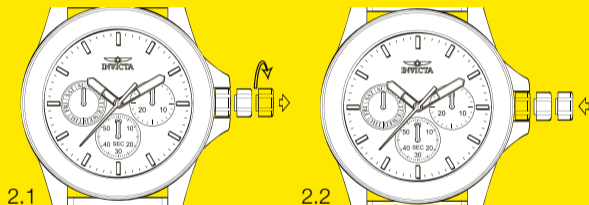
Setting

Setting the Day

- 2.1 Pull the crown to position 3 when the small second hand is at the 12 o'clock position.
- 2.2 Turn the crown clockwise to set the desired day.
- 2.3 Push the crown back to position 1.

Please note:

Check that AM/PM is set correctly



Movement Caliber : VD76

Setting

Setting the Date

3.1 Pull the crown to position 2.

3.2 Turn the crown counter-clockwise to the desired date

3.3 Push the crown back to position 1.

!!Attention!!

Please Do Not set between 22:00 and 1:00.

Otherwise, the day may not change properly. If it is necessary to set the date during that time period, first change the time to any time outside it, set the date and then reset the correct time.

