



INVICTA

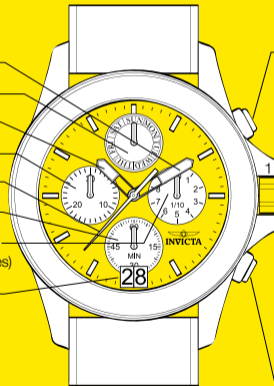
Movement Caliber 8040.N

INFO Battery: 384
(diametaer 7.9mm x 3.6mm / SR 41 Accuracy: +20 / -10 seconds per monthSW)

Movement Caliber : 8040.N
Presentation

Display Elements

Minute Hand
Day
Hour Hand
Minute Counter
Center Stop-Second
Second Hand
1/10 Second Counter
(Hour counter after 30 minutes)
Date



Control Buttons

Push Button A

Crown Positions:

1. Normal position
2. Quick correction of date
3. Correction of hour, minute, day, date and second time zone / 24-hour

Push Button B

Movement Caliber : 8040N

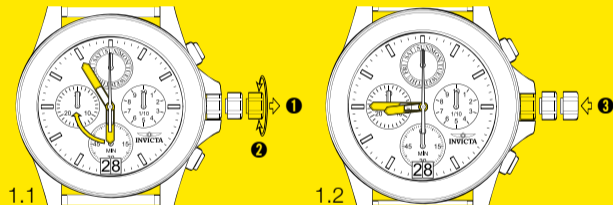
Setting

Setting the Time

- ❶ Pull out the crown to position 3 (the watch stops).*
- ❷ Turn the crown until you reach the correct time 8:45.
- ❸ Push the crown back into position 1.*

Please note

* In order to set the time to the exact second, ❶ must be pulled out when the second hand is in position «60».
Once the hour and minute hands have been set, ❸ must be pushed back into position 1 at the exact second.



Movement Caliber : 8040N

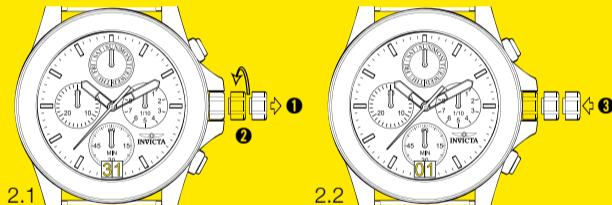
Setting

Setting the Date (Quick Mode)

- ❶ Pull out the crown to position 2 (the watch continues to run).
- ❷ Turn the crown counter clockwise until the correct date 1 appears.
- ❸ Push the crown back into position 1.

Please note:

During the date changing phase between 9 PM and 12 PM; the date must be set to the date of the following day. An extreme acceleration in setting the date with quick mode can create a false date indication. The synchronization is re-established by setting the date from 01 till 31 (crown in position 2).



Movement Caliber : 8040N

Setting

Setting the Date / Weekday and Time

Example:

– Date / time on the watch: 17 / 1:25 AM / MON

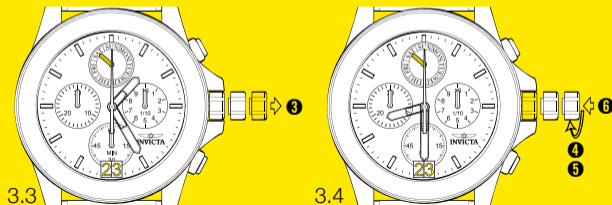
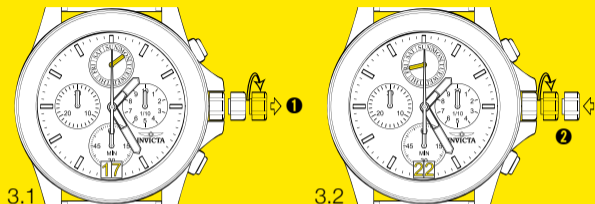
– Present date / time: 23 / 20:30 PM / SAT

- 1 Pull out the crown to position 3 (the watch stops).
- 2 Turn the crown until yesterday's weekday FRI appear.
- 3 Pull out the crown to position 3.
- 4 Turn the crown backwards until yesterday's date appears 22 .
- 5 Pull out the crown to position 3 (the watch stops).*
- 6 Turn the crown until the correct date 23 and weekday SAT appears.
- 7 Continue to turn the crown until the correct time 8:35 PM appears.**
- 8 Push the crown back into position 1.

Please note:

* To set your watch to the exact second, please refer to chapter titled "Setting The Time".

** Please observe the AM / PM clock rhythm.



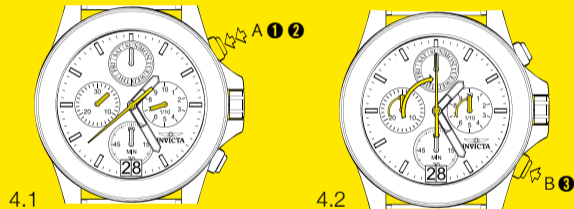
Movement Caliber : 8040N

Functions

Chronograph: Basic Function (Start / Stop / Reset)

Example:

- 1 Start: Press push button A.
- 2 Stop: To stop the timing, press push button A once more and read the 3 chronograph counters: 4 min / 38 sek / 7/10 sec
- 3 Zero positioning: Press push button B.
(The 3 chronograph hands will be reset to their zero position).



Movement Caliber : 8040N

Functions

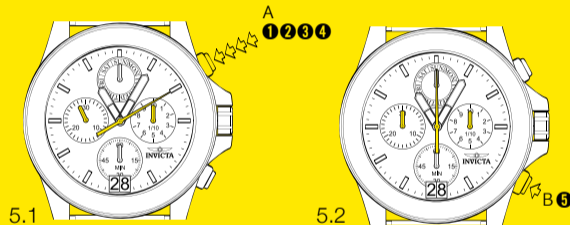
Chronograph: Accumulated Timing

Example:

- ➊ Start: (start timing)
- ➋ Stop: (e.g. 15 min 5 sec following ➊)
- ➌ Restart: (timing is resumed)
- ➍ Stop: (e.g. 13 min 5 sec following ➌)
= 28 min 10 sec (The accumulated measured time is shown)*
- ➎ Reset: The 3 chronograph hands are returned to their zero position.

Please note:

* Following ➍, the accumulation of the timing can be continued by pressing push button A (Restart / Stop, Restart / Stop, ...)



Movement Caliber : 8040N

Functions

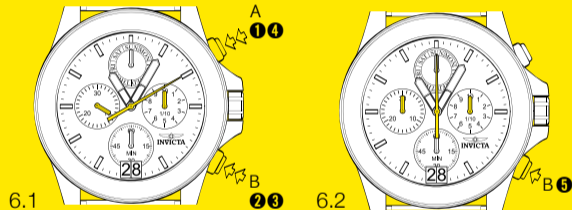
Chronograph: Intermediate or Interval Timing

Example:

- ➊ Start: (start timing)
- ➋ Display interval: e.g. 10 minutes 10 seconds
(timing continues in the background)
- ➌ Making up the measured time:
(the 3 chronograph hands are quickly advanced to the ongoing measured time).
- ➍ Stop: (Final time is displayed)
- ➎ Reset: The 3 chronograph hands are returned to their zero position.

Please note:

* Following ➍, the accumulation of the timing can be continued by pressing push button A (Restart / Stop, Restart / Stop, ...)



Movement Caliber : 8040N

Calibration

Adjusting the Chronograph Hands to Zero Position

Example:

One or several chronograph hands are not in their correct zero position and have to be adjusted (e.g. following a battery change).

- 1 Pull out the crown to position 3

(all 3 chronograph hands are in their correct or incorrect zero position).

- 2 Keep push-buttons A and B depressed simultaneously for at least 2 seconds (the center stop-second rotates by 360° → corrective mode is activated).

Adjusting the center stop second → Single step A1 x short → Continuous A long → Adjusting the next hand B → Adjusting the 1/10 second counter hand (position 6h) → Single step A1 x short → Continuous A long → Adjusting the next hand B → Adjusting the minute counter (position 9h) → Single step A1 x short → Continuous A long

- 3 Returning the crown to position 1. Termination of the chronograph hands adjustment (can be carried out at any time).

