



feel the bliss

INVICTA



of Invicta jewelry





made in Italy



with love.

Invicta Jewelry Made in Italy transforms the everyday creating an assortment of integrated artful variations. The detailed pieces embody a complexity of form and structure, making the jewelry versatile as well as the perfect Invicta complement for any occasion.



Earrings: Artificial Ivory. Silver 925. Rhodium plating.

Necklace: Artificial Ivory. Silver 925. Rhodium plating. 114cm long.

THE INVICTA RESERVE INCANTO BOLD



Celestial bodies **orbit a star.**

Bracelet: Artificial Ivory. 24K gold. Chocolate plating. 90mm diameter.

Necklace: Artificial Ivory. 24K gold. Chocolate plating. 140mm diameter.



THE INVICTA
RESERVE INCANTO
BOLD



JB0002

JB0004



JB0001

JB0003

Audacious and daring.

Bracelet: Brass. 24K yellow or rose gold plating. Rhodium plating. 23cm long.

Necklace: Brass. 24K yellow or rose gold plating. Rhodium plating. 52cm long.



THE INVICTA
RESERVE INCANTO DROPLETS
CHOKER



A modern Italian take on **the sexy classic.**

Necklace: Silk and silver fabric mesh. Silver 925. 24K gold or rhodium plating. 42cm long.



Bracelet: Silver 925. 24K gold plating. Hand-painted ceramic. Rhodium plating. 20cm long.

Necklace: Silver 925. 24K gold plating. Hand-painted ceramic. Rhodium plating. 105cm long.



THE INVICTA
RESERVE INCANTO DROPLETS



A playful entanglement of fluid design.

Earrings: Silver 925. 18K gold and rhodium plating.

Necklace: Silver 925. 18K gold and rhodium plating. 45cm long.



Earrings: Silver 925. 24K gold and chocolate plating.
Hand-painted ceramic.

Necklace: Silver 925. 24K gold and chocolate plating.
Hand-painted ceramic. 47cm long.





Earrings: Silver 925. Rhodium plating. Hand-painted ceramic.

Bracelet: Silver 925. Rhodium plating. Hand-painted ceramic. 22cm long.

Necklace: Silver 925. Rhodium plating. Hand-painted ceramic. 105cm long.



THE INVICTA RESERVE INCANTO DROPLETS



A delicate accessory **for a fair lady.**

Earrings: Silver 925. 18K rose gold and rhodium plating.

Bracelet: Silver 925. 18K rose gold and rhodium plating. Hand-painted ceramic.

Necklace: Silver 925. 18K rose gold and rhodium plating. Hand-painted ceramic. 86cm long.

Earrings: Silver 925. Rhodium plating. Hand-painted ceramic.

Necklace: Silver 925. 18K rose gold and rhodium plating. Hand-painted ceramic. 45cm long.





Earrings: Silver 925. 18K rose gold and rhodium plating. Hand-painted ceramic.

Necklace: Silver 925. 18K rose gold and rhodium plating. Hand-painted ceramic. 65cm long.



THE INVICTA RESERVE INCANTO



J0122



J0123

Summoning **the goddess within.**

Bracelet J0122: Silver 925. 18K gold plating. Hand-painted ceramic. 56mm diameter.

Bracelet J0123: Silver 925. Rhodium plating. Hand-painted ceramic. 56mm diameter.

Ring: Silver 925. 18K rose gold and rhodium plating.
Hand-painted ceramic.

Necklace: Silver 925. 18K rose gold and rhodium plating.
Hand-painted ceramic. 65cm long.



J0053

J0047



THE INVICTA RESERVE
INCANTO



Simply **enchanting**.

- Earrings:** Silver 925. Rhodium plating. Hand-painted ceramic.
- Bracelet:** Silver 925. Rhodium plating. Hand-painted ceramic. 23cm long.
- Necklace:** Silver 925. Rhodium plating. Hand-painted ceramic. 50cm long.

- Ring:** Silver 925. Rhodium plating. Hand-painted ceramic.
- Earrings:** Silver 925. Rhodium plating. Hand-painted ceramic.
- Earrings:** Silver 925. Rhodium plating. Hand-painted ceramic.
- Bracelet:** Silver 925. 18K rose gold and rhodium plating. Hand-painted ceramic. 22.5cm long.
- Necklace:** Silver 925. 18K rose gold and rhodium plating. Hand-painted ceramic. 50cm long.





Bracelet: Silver 925. 24K gold plating.
Hand-painted ceramic. 21cm long.

Necklace: Silver 925. 24K gold plating.
Hand-painted ceramic. 60cm long.

THE INVICTA RESERVE INCANTO



Simply **enchanting**.

- Ring:** Silver 925. 24K gold plating. Hand-painted ceramic. 21cm long.
- Bracelet:** Silver 925. 24K gold plating. Hand-painted ceramic. 21cm long.
- Necklace:** Silver 925. 24K gold plating. Hand-painted ceramic. 60cm long.

THE INVICTA RESERVE INCANTO



A lunar reflection **shines its magic.**

Bracelet: Silver 925. Rhodium plating. Hand-painted ceramic. 24cm long.
Necklace: Silver 925. Rhodium plating. Hand-painted ceramic. 50cm long.

Ring: Silver 925. Rhodium plating. Hand-painted ceramic.
Earrings: Silver 925. Rhodium plating. Hand-painted ceramic.
Bracelet: Silver 925. Rhodium plating. Hand-painted ceramic. 24cm long.
Necklace: Silver 925. Rhodium plating. Hand-painted ceramic. 50cm long.



Ring: Silver 925. Silver 925. 18K rose gold and rhodium plating. Hand-painted ceramic.

Earrings: Silver 925. Rhodium plating. Hand-painted ceramic.

Bracelet: Silver 925. Silver 925. 18K rose gold and rhodium plating. Hand-painted ceramic. 21cm long.

Necklace: Silver 925. Silver 925. 18K rose gold and rhodium plating. Hand-painted ceramic. 50cm long.



THE INVICTA RESERVE GRAZIA



J0024



J0026



J0025

A smooth statement **in eloquence.**

Bracelet: Silver 925. Rhodium, 18K rose gold or 24K gold plating. 65mm diameter.



THE INVICTA RESERVE GRAZIA



Come fly with me.

Necklace: Silver 925. Rhodium plating. 45cm long.



Bracelet: Silver 925. Rhodium plating.
Hand-painted ceramic. 22cm long.

Necklace: Silver 925. Rhodium plating.
Hand-painted ceramic. 80cm long.



THE INVICTA RESERVE GRAZIA



Encircle the situation **with grace.**

Earrings: Silver 925. Rhodium plating. Hand-painted ceramic.

Bracelet: Silver 925. Rhodium plating. Hand-painted ceramic. 20cm long.

Necklace: Silver 925. Rhodium plating. Hand-painted ceramic. 48cm long.



THE INVICTA RESERVE GRAZIA



A fluent **point of view.**

Earrings: Silver 925. Rhodium plating. Hand-painted ceramic.

Necklace: Silver 925. Rhodium plating. Hand-painted ceramic. 50cm long.



THE INVICTA RESERVE GRAZIA



J0143



J0141



J0142



J0140



J0138



J0139

The fun **is in numbers.**

Bracelets: Silver 925. Rhodium, 18K gold or 18K rose gold plating. 65mm diameter.





THE INVICTA
VENOM WILD



J0144



J0146



J0145

Bracelets: Silver 925. Rhodium, 18K gold or ruthenium plating. 55mm diameter.

THE INVICTA **VENOM WILD**



The magic **is in the harmony.**

- Bracelet:** Brass. 18K gold and rhodium plating. White Agate. 23cm long.
- Bracelet:** Brass. 18K gold and rhodium plating. White Agate. 60cm long.



- Bracelet:** Brass. 18K gold and rhodium plating. Black Onyx. 23cm long.
- Bracelet:** Brass. 18K gold and rhodium plating. Black Onyx. 60cm long.





THE INVICTA **VENOM WILD**



Rings: Silver 925. Enamel. 18mm diameter.

THE INVICTA **VENOM WILD**



Not for **the tame** of heart.

Earrings: Silver 925. 18K gold plating.
Bracelet: Silver 925. 18K gold plating. 22cm long.
Necklace: Silver 925. 18K gold plating. 50cm long.



Earrings: Silver 925. Rhodium plating.
Bracelet: Silver 925. Rhodium plating. 22cm long.
Necklace: Silver 925. Rhodium plating. 50cm long.



THE INVICTA **VENOM WILD**



An effortless balance **for the risk within.**

Earrings: Silver 925. 18K gold and rhodium plating.
Necklace: Silver 925. 18K gold and rhodium plating. 80cm long.

Earrings: Silver 925. Rhodium plating.
Necklace: Silver 925. Rhodium plating. 80cm long.



THE INVICTA **VENOM WILD**



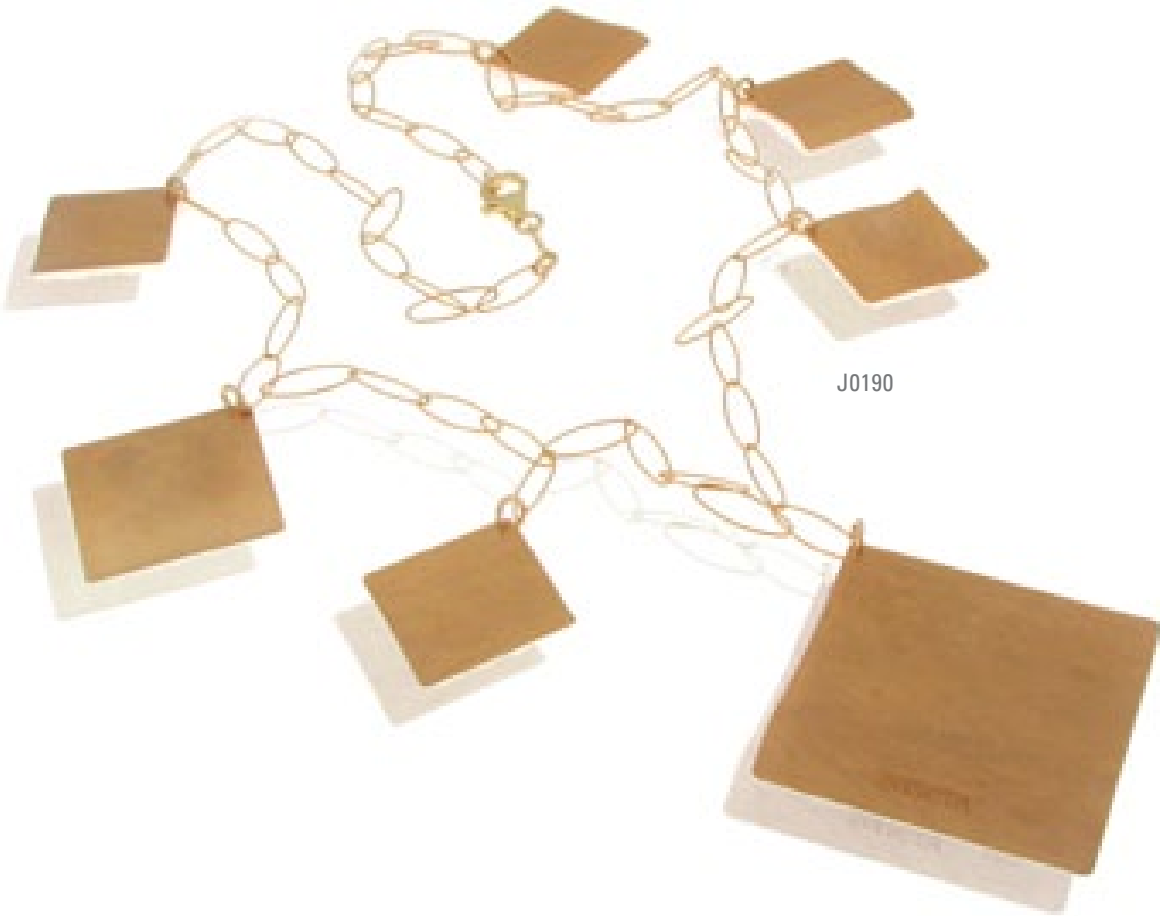
A manifestation **of the eternal.**

Earrings: Silver 925. Rhodium plating.
Necklace: Silver 925. Rhodium plating. 80cm long.

Earrings: Silver 925. Rhodium plating.
Necklace: Silver 925. Rhodium plating. 80cm long.



THE INVICTA **VENOM WILD**



J0190

Gaining **the light**.

Necklace: Silver 925. 18K gold plating. 80cm long.



Earrings: Silver 925. 18K gold plating.

Necklace: Silver 925. 18K gold plating. 80cm long.



J0183

J0189

J0185

THE INVICTA **VENOM WILD**



Why not **come around sometime?**

Earrings: Silver 925. 18K gold and rhodium plating.
Necklace: Silver 925. 18K gold and rhodium plating. 100cm long.



Earrings: Silver 925. Rhodium plating.
Bracelet: Silver 925.
Rhodium plating. 19.5cm long.
Necklace: Silver 925.
Rhodium plating. 45cm long.



THE INVICTA **VENOM WILD**



Earrings: Silver 925. 18K rose gold and rhodium plating.
Bracelet: Silver 925. 18K rose gold and rhodium plating. 22cm long.
Necklace: Silver 925. 18K rose gold and rhodium plating. 52cm long.



Synchronicity **in motion.**

Earrings: Silver 925. Rhodium plating.
Bracelet: Silver 925. Rhodium plating. 22cm long.
Necklace: Silver 925. Rhodium plating. 52cm long.

THE INVICTA **VENOM** LUCE



Where integration **becomes poetry.**

- Ring:** Silver 925. White Agate and black Onyx paste. Rhodium plating.
- Bracelet:** Silver 925. White Agate and black Onyx paste. Rhodium plating. 65mm diameter.
- Necklace:** Silver 925. White Agate and black Onyx paste. Rhodium plating. 60cm long.



- Ring:** Silver 925. White Agate and black Onyx paste. Rhodium plating.
- Bracelet:** Silver 925. White Agate and black Onyx paste. Rhodium plating. 65mm diameter.
- Necklace:** Silver 925. White Agate and black Onyx paste. Rhodium plating. 60cm long.



THE INVICTA CORDUBA



A fusion of meaningful power.

- Earrings:** Silver 925. Acrylic Resin. 18K gold plating.
- Bracelet:** Silver 925. Acrylic Resin. 18K gold plating. 24K gold plating on clasp. 21cm long.
- Necklace:** Silver 925. Acrylic Resin. 18K gold plating. 24K gold plating on clasp. 80cm long.

- Earrings:** Silver 925. Acrylic Resin. Rhodium plating.
- Bracelet:** Silver 925. Acrylic Resin. Rhodium plating. 20cm long.
- Necklace:** Silver 925. Acrylic Resin. Rhodium plating. 50cm long.



THE INVICTA CORDUBA



Earrings: Silver 925. Acrylic Resin. 18K gold plating.
Necklace: Silver 925. Acrylic Resin. 18K gold plating. 24K gold plating on clasp. 80cm long.



Dare to be effortless.
Earrings: Silver 925. Acrylic Resin. Rhodium and chocolate plating.
Necklace: Silver 925. Acrylic Resin. Rhodium and chocolate plating. 80cm long.

THE INVICTA CORDUBA
TORTOISE CUFF

J0201



J0203



J0202



J0198



J0199



J0200



Bracelets: Silver 925. Acrylic Resin. Rhodium, 18K gold or rose gold plating. 55mm diameter.



A perfectly **calibrated level.**

Bracelets: Silver 925. Acrylic Resin. Rhodium, 18K gold or rose gold plating. 55mm diameter.

THE INVICTA **CORDUBA**
TORTOISE CUFF

J0201



J0203



J0202



J0198



J0199



J0200



Bracelets: Silver 925. Acrylic Resin. Rhodium, 18K gold or rose gold plating. 55mm diameter.



Join in **it's a jungle out there.**

Bracelets: Silver 925. Acrylic Resin. Rhodium, 18K gold or rose gold plating. 55mm diameter.

THE INVICTA
CORDUBA PARADISO



Forms of harmonious distinction.

Earrings: Silver 925. Wenge Wood. 24K gold plating.
Bracelet: Silver 925. Wenge Wood. 24K gold plating. 20cm long.
Necklace: Silver 925. Wenge Wood. 24K gold plating. 70cm long.

Earrings: Silver 925. Wenge Wood. 24K gold plating.
Bracelet: Silver 925. Wenge Wood. 24K gold plating. 20cm long.
Necklace: Silver 925. Wenge Wood. 24K gold plating. 70cm long.



J0091

J0085

J0089

J0087

THE INVICTA
CORDUBA PARADISO



A better way to take shape.

Earrings: Silver 925. Wenge Wood. Rhodium plating.
Bracelet: Silver 925. Wenge Wood. Rhodium plating. 21cm long.
Necklace: Silver 925. Wenge Wood. Rhodium plating. 68cm long.



Earrings: Silver 925. Wenge Wood. Rhodium plating.
Bracelet: Silver 925. Wenge Wood. Rhodium plating. 21cm long.
Necklace: Silver 925. Wenge Wood. Rhodium plating. 68cm long.



THE INVICTA
CORDUBA PARADISO



Earrings: Silver 925. Wenge Wood. 18K rose gold plating.
Necklace: Silver 925. Wenge Wood. 18K rose gold plating. 80cm long.



The look **of crafted balance.**

Earrings: Silver 925. Wenge Wood. Rhodium plating.
Necklace: Silver 925. Wenge Wood. Rhodium plating. 80cm long.

THE INVICTA
CORDUBA PARADISO



Materials **crafted for enchantment.**

Earrings: Silver 925. Wenge Wood. 18K gold plating.
Necklace: Silver 925. Wenge Wood. 18K gold plating. 80cm long.



Earrings: Silver 925. Wenge Wood. 18K gold plating.
Bracelet: Silver 925. Wenge Wood. 18K gold plating. 24cm long.
Necklace: Silver 925. Wenge Wood. 18K gold plating. 105cm long.



THE INVICTA **ANGEL** TOKEN



Divinity **seen in the details.**

Earrings: Silver 925. Enamel. Rhodium plating.
Bracelet: Silver 925. Enamel. Rhodium plating. 21cm long.
Necklace: Silver 925. Enamel. Rhodium plating. 50cm long.

Earrings: Silver 925. Enamel. Rhodium plating.
Bracelet: Silver 925. Enamel. Rhodium plating. 21cm long.
Necklace: Silver 925. Enamel. Rhodium plating. 50cm long.



THE INVICTA ANGEL WHISPER



Earrings: Brass. Agate. Rhodium plating.
Bracelet: Brass. Agate. Rhodium plating. 23cm long.
Necklace: Brass. Agate. Rhodium plating. 60cm long.



Metals and stones, **softly entoned.**

Earrings: Brass. Agate. Rhodium plating.
Bracelet: Brass. Agate. Rhodium plating. 23cm long.
Necklace: Brass. Agate. Rhodium plating. 60cm long.





Earrings: Brass. Agate. Rhodium plating.

Bracelet: Brass. Agate. Rhodium plating. 23cm long.

Necklace: Brass. Agate. Rhodium plating. 60cm long.



THE INVICTA ANGEL WHISPER



A gentle suggestion, **manifested.**

Necklace: Iron. Agate. Rhodium, 18K gold or rose gold plating. 52cm long.



THE INVICTA ANGEL WHISPER



JB0040



JB0043



JB0046



Necklace: Iron. Black Onyx. Rhodium, 18K gold or rose gold plating. 52cm long.

THE INVICTA ANGEL WHISPER



JB0041



JB0044



JB0047



Necklace: Iron. Turquoise. Rhodium, 18K gold or rose gold plating. 52cm long.

Bracelet: Iron. Turquoise, balck Onyx or white Agate. 18K gold plating. 65mm diameter.

THE INVICTA ANGEL WHISPER



A breath of light **ornamental giifts.**

Bracelet: Iron. Turquoise, balck Onyx or white Agate. Rhodium plating. 65mm diameter.



Bracelet: Iron. Turquoise, black Onyx or white Agate. 18K rose gold plating. 65mm diameter.



JB0038



JB0037



JB0036

THE INVICTA **ANGEL LINK**



Loose chains **foa a free spirit.**

Bracelet: Brass. White Agate. Rhodium plating. 21cm long.
Necklace: Brass. White Agate. Rhodium plating. 86cm long.

Bracelet: Brass. Black Onyx. Rhodium plating. 21cm long.
Necklace: Brass. Black Onyx. Rhodium plating. 86cm long.



JB0011

JB0005



JB0012

JB0006

THE INVICTA ANGEL LINK



JB0013

JB0007

Bracelet: Brass. White Agate. 18K gold plating. 24K gold plating on clasp. 21cm long.
Necklace: Brass. White Agate. 18K gold plating. 24K gold plating on clasp. 86cm long.

Bracelet: Brass. Black Onyx. 18K gold plating. 24K gold plating on clasp. 21cm long.
Necklace: Brass. Black Onyx. 18K gold plating. 24K gold plating on clasp. 86cm long.



JB0014

JB0008



THE INVICTA ANGEL LINK



Bracelet: Brass. White Agate. 18K gold plating. 24K rose gold plating on clasp. 21cm long.
Necklace: Brass. White Agate. 18K gold plating. 24K rose gold plating on clasp. 86cm long.

Bracelet: Brass. Black Onyx. 18K gold plating. 24K rose gold plating on clasp. 21cm long.
Necklace: Brass. Black Onyx. 18K gold plating. 24K rose gold plating on clasp. 86cm long.



JB0010

JB0016

JB0015

JB0009

THE INVICTA
AVIATOR FLY-BY



Always a sleek option.

- Bracelet J001:** Silver 925. Black Agate and white Onyx. 18K rose gold and rhodium plating. 20cm long.
- Bracelet J002:** Silver 925. Black Agate and white Onyx. 18K rose gold and rhodium plating. 20cm long.
- Bracelet J003:** Silver 925. Natural Rubber. Rhodium plating. 20cm long.



invictawatch.com




INVICTA
Smarter by the Second.



invictawatch.com

© 2013. Invicta Watch Company of America.