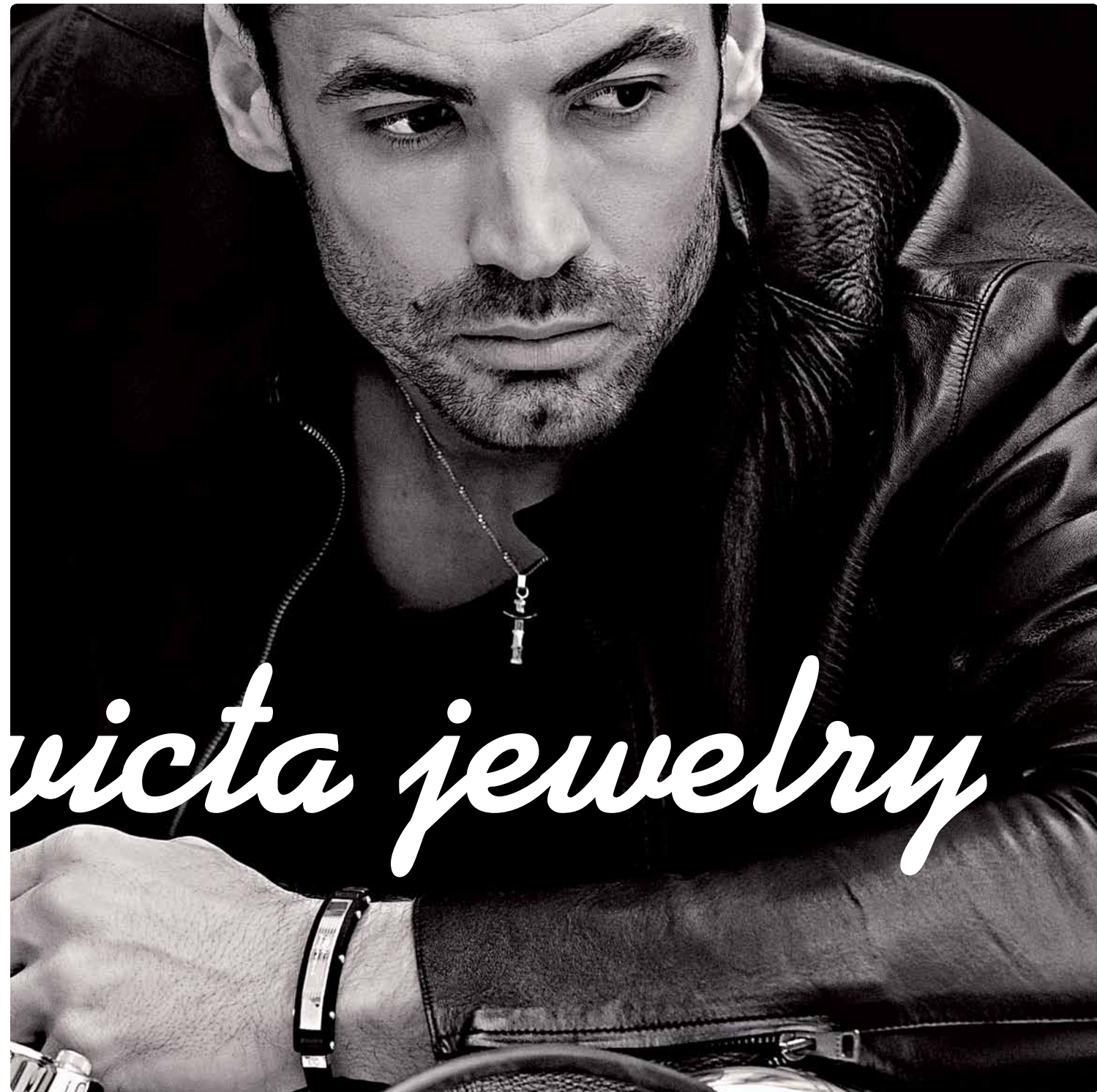




wrap yourself

INVICTA



in Invicta jewelry

A sepia-toned photograph of a river in Italy. A bridge with several arches spans the river. Buildings line the banks, and a few small boats are on the water. The text "made in Italy" is written in a white, cursive font across the lower part of the image.

made in Italy

A sepia-toned photograph of a large, classical-style building with a prominent portico and a tall, crenellated tower in the background. The text "with love." is written in a white, cursive font across the lower part of the image.

with love.

Invicta Jewelry Made in Italy transforms the everyday creating an assortment of integrated artful variations. The detailed pieces embody a complexity of form and structure, making the jewelry versatile as well as the perfect Invicta compliment for any occasion.

THE INVICTA AVIATOR FIRST OFFICER



JS008



JS009



JS010



JS011

Precision is in the details.

Polyester and stainless steel band with stainless steel clasp.

3-way adjustable length: 21.0cm, 21.7cm and 22.5cm.



THE INVICTA AVIATOR FIRST OFFICER



As color vibrates you **make a statement.**

Polyester and stainless steel band with stainless steel clasp.

3-way adjustable length: 21.0cm, 21.7cm and 22.5cm.



JS012



JS013



JS014



JS015

THE INVICTA AVIATOR BUSH PILOT



JS001



JS002

Out of the norm with a **daring attitude.**

Genuine leather band with stainless steel clasp.

3-way adjustable length: 21.0cm, 21.7cm and 22.5cm.

THE INVICTA BUSH PILOT II

Trustworthy and **always reliable.**

Rubber band with stainless steel clasp.

3-way adjustable length: 21.0cm, 21.7cm and 22.5cm.



JS003



JS004



JS005



JS006



JS007



THE INVICTA AVIATOR AEROBATIC PRO



Always ready **for a spin, or two.**

Enameled copper band with silver clasp.

Length: 21 cm



J0215



J0218



J0216



J0219



J0217



J0220

THE INVICTA AVIATOR AEROBATIC PRO



J0207



J0209



J0208



J0210



J0211



J0095



J0096



J0097



J0098



J0212



J0213



J0214

A little detail to **ground your peers.**

Enameled copper band with silver soft-touch clasp.

Length: 21 cm



THE INVICTA AVIATOR AEROBATIC X-TREME



J0099



J0100



J0101



J0102



J0103



J0104

Nose up attitude at **full throttle.**

Enameled copper band with silver or soft-touch clasp.

Length: 20cm



THE INVICTA CORDUBA ALLY



J0005



J0007



J0009



J0011



J0013

The friendly companion **for any adventure.**

Artificial leather band with silver soft-touch clasp.

Length: 21cm



THE INVICTA CORDUBA CONSORT



J0092



J0093



J0094



J0204



J0205



J0206

The elegant complement **to any occasion.**

Genuine leather band with silver soft-touch clasp.

Length: 21 cm



THE INVICTA BOLT SKIPPER



From day to night a **solid partner.**

20 cm. long stainless steel band with 18kt gold plating on gold and rose gold tones.

Silver clasp with 18kt gold plating on gold and rose gold tones.



J0221



J0222



J0223



J0224





J0225



J0229



J0233



J0237



J0226



J0230



J0234



J0238



J0227



J0231



J0235



J0239



J0228



J0232



J0236



J0240






INVICTA
Smarter by the Second.

invictawatch.com

© 2013, Invicta Watch Company of America.