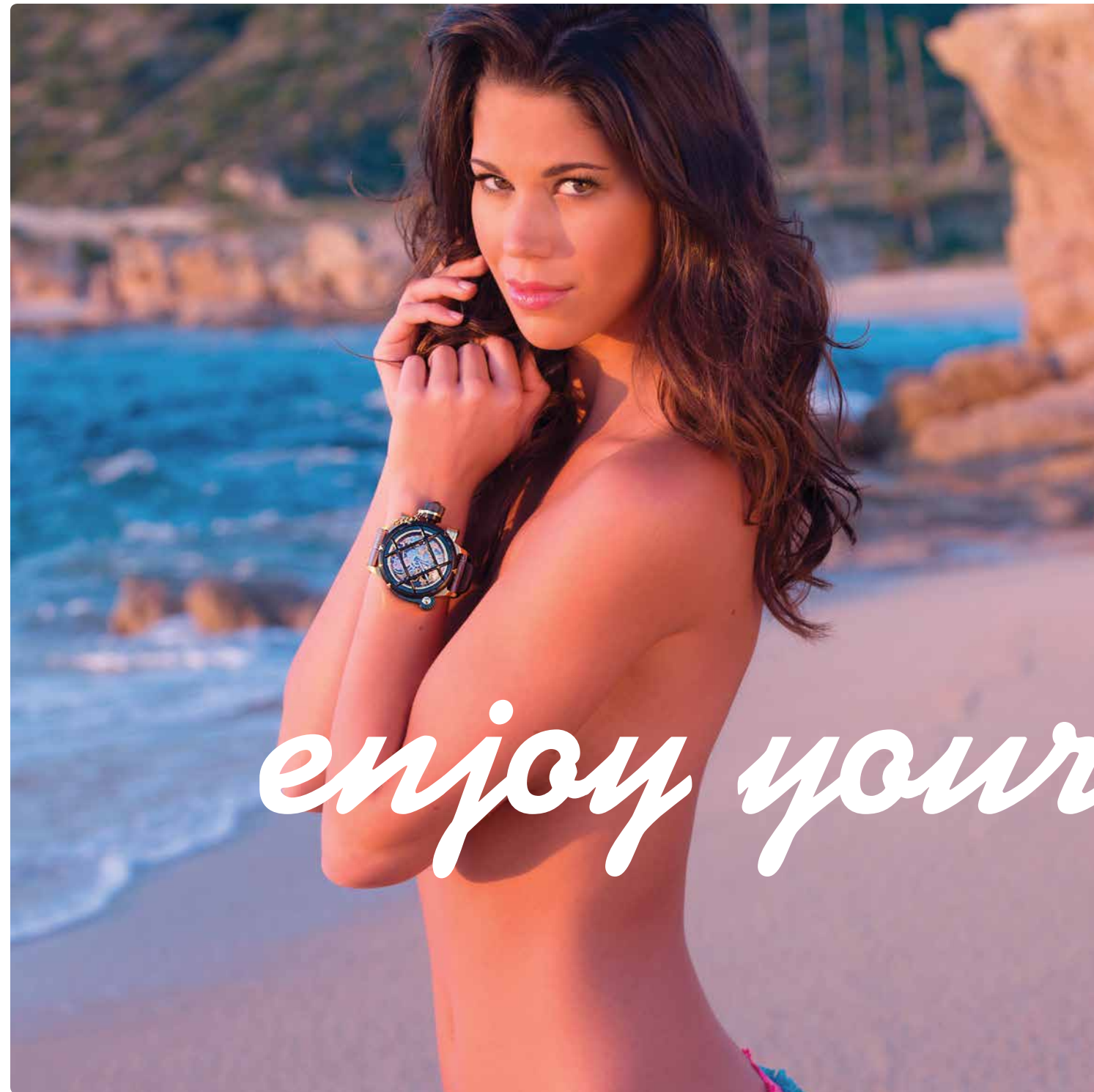




welcome to

INVICTA



enjoy your stay



The Invicta Russian Diver Nautilus . Model 14625

Movement: Hand Built Mechanical Swiss Made 25 Jewel Skeleton

Case and Dial: Ø50mm . Solid stainless steel case and push/pull crown with oversized crown protector . Patent dual-release hatch dial and case-back cover . Flame Fusion crystal . Skeleton dial . 18kt gold and black IP gun metal plating . Stainless steel screw-down crown and pushers . Exhibition caseback

Band: Genuine leather . Solid stainless steel buckle

Water Resistance: 1000 meters tested



Latin for "Invincible," Invicta was founded in La Chaux-de-Fonds, Switzerland by Raphael Picard. Picard had the radical notion that fine Swiss timepieces could be offered at modest prices. In 1837 Invicta began handcrafting its first watches and for well over a century this diligent company created manual and automatic winding pieces of exceptional design and construction. Like so many Swiss names of its day, the brand all but disappeared during the quartz invasion of the early 1970's.

In 1991 the descendants of the Invicta family re-established the brand holding firm to Picard's founding principle. With rebellious zeal they quickly recognized that Invicta could provide the long ignored, sizeable segment of the watch buying public with unprecedented access to the fine Swiss quality they fervently sought at prices well within their reach. Still privately owned and operated, Invicta has powered forward with Picard's maverick spirit and the once small company has grown into a dynamic force worshipped by collectors but feared by the watch-making industry.



As Invicta's scope widened so to did the company's watch making prowess with the development of its own movement calibers, the Technica Swiss Ebauche. In accordance with its growth Invicta moved its key productions from Chiasso to its new facility in L'Abbaye, Switzerland. New complications were also achieved, as were advances in the company's renowned quality control process.

In early 2000 Invicta's non-conformist attitude worked its way into the design of the Lupah Swiss Chronograph. The Lupah became an overnight sensation coveted by collectors and fashionistas alike! Today the Lupah family has expanded to suit the varying taste and palette of both the ladies and the gents. With the success of the Lupah, Invicta began to broaden its horizons and introduce new models of varying capabilities, styles, sizes, and cutting-edge designs.





INVICTA
SUBAQUA
BEST UNDER PRESSURE

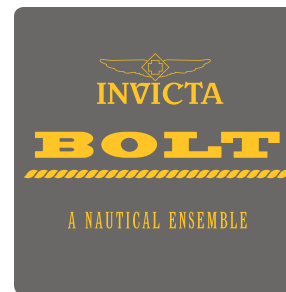
The Invicta Subaqua NOMA V . Model 12882

Movement: Professional Swiss Quartz Chronograph

Case and Dial: Ø50mm . Solid stainless steel case . Unidirectional rotating bezel with blue IP . Stainless steel screw-down crown and pushers . Flame Fusion crystal . Tritnite luminous hands and indexes . Date display

Band: High-grade polyurethane strap . Stainless steel inserts and buckle

Water Resistance: 500 meters tested



The Invicta Lady Bolt Reserve . Model 12460

Movement: Professional Swiss Quartz Chronograph

Case and Dial: Ø40mm . Solid stainless steel case and push-crown . Unidirectional rotating bezel with stainless steel intertwining wires . Flame fusion crystal . Tritnite luminous hands and indexes . 18kt rose gold plating

Band: Solid stainless steel band and diver buckle with safety clasp . 18kt rose gold plating

Water Resistance: 200 meters tested



The Invicta Bolt Zeus Reserve C.O.S.C. . Model 12899

Movement: Professional Swiss Quartz Chronograph

Case and Dial: Ø53mm . Solid stainless steel case . Unidirectional rotating bezel with stainless steel interweaving wires . Stainless steel screw-down crown . Flame fusion crystal . Tritnite luminous hands and markers . Date display

Band: Solid stainless steel band and diver buckle with safety deployment clasp

Water Resistance: 200 meters tested



INVICTA
PRO DIVER
MASTER OF THE OCEANS

The Invicta Pro Diver Australian . Model 14647

Movement: Professional Swiss Quartz Chronograph

Case and Dial: Ø48mm . Solid stainless steel case . Unidirectional rotating bezel . Stainless steel screw-down crown and pushers . Mineral crystal . Tritnite luminous hands and indexes . Sunray dial . Exhibition caseback . Date display

Band: Solid stainless steel band with divers safety clasp

Water Resistance: 300 meters tested



The Invicta Russian Diver Artist Series . Misfits . "Bad Dog App" . Model 14633

Movement: Professional Swiss Quartz

Case and Dial: Ø52mm . Solid stainless steel and polyurethane case . Stationary bezel . Stainless steel push/pull crown with screw-down protective cap . Flame fusion crystal . Luminous hands

Band: High-grade polyurethane band . Solid stainless steel barrels and buckle

Water Resistance: 100 meters tested



The Invicta Venom Reserve . Model 10830

Movement: Professional Swiss Quartz Chronograph

Case and Dial: Ø53.7mm . Solid stainless steel case . Unidirectional rotating bezel . Stainless steel screw-down crown and pushers . Flame Fusion crystal . Tritnite luminous hands and indexes . Date display . 18kt rose gold plated

Band: High-grade polyurethane strap . Stainless steel buckle . 18kt rose gold plating

Water Resistance: 1000 meters tested



The Invicta Venom Iridescent . Model 15984

Movement: Professional Swiss Quartz Chronograph

Case and Dial: Ø53.7mm . Solid stainless steel case with iridescent plating . Unidirectional rotating bezel . Stainless steel screw-down crown and pushers . Flame Fusion crystal . Tritnite luminous hands and indexes . Date display

Band: High-grade polyurethane strap . Solid stainless steel buckle

Water Resistance: 1000 meters tested



The Invicta S1 Rally . Model 13061

Movement: Professional Quartz Chronograph

Case and Dial: Ø52 mm . Solid stainless steel case . Screw-down crown and pushers . Mineral crystal . Tritnite luminous hands and indexes . Date display

Band: Polyurethane rubber . Solid stainless steel buckle

Water Resistance: 200 meters tested



The Invicta Bolt Reserve . JASON TAYLOR LIMITED EDITION . Model 14423

Movement: Professional Swiss Quartz Chronograph

Case and Dial: Ø53mm . Solid stainless steel case . Unidirectional rotating bezel with stainless steel intertwining wires . Stainless steel screw-down crown . Flame fusion crystal . Black IP plating . Tritnite luminous hands and markers . Date display

Band: Solid stainless steel band and diver buckle with safety deployment clasp

Water Resistance: 200 meters tested



The Invicta Akula Reserve . Model 14519

Movement: Professional Swiss Quartz Chronograph

Case and Dial: Ø52mm . Solid stainless steel case with 18kt gold and black IP plating . Fixed bezel . Push/pull crown and push-down pushers . Flame Fusion crystal . Tritnite luminous hand and indexes . Date display

Band: Solid stainless 18kt gold plating with divers safety clasp

Water Resistance: 100 meters tested



The Invicta Reserve Retrograde . Model 12484

Movement: Professional Quartz Chronograph

Case and Dial: Ø52 mm . Solid stainless steel case and unidirectional rotating bezel . 18kt gold plating . Stainless steel screw-down crown . Flame Fusion crystal . Tritnite luminous hands and indexes . Date and day display

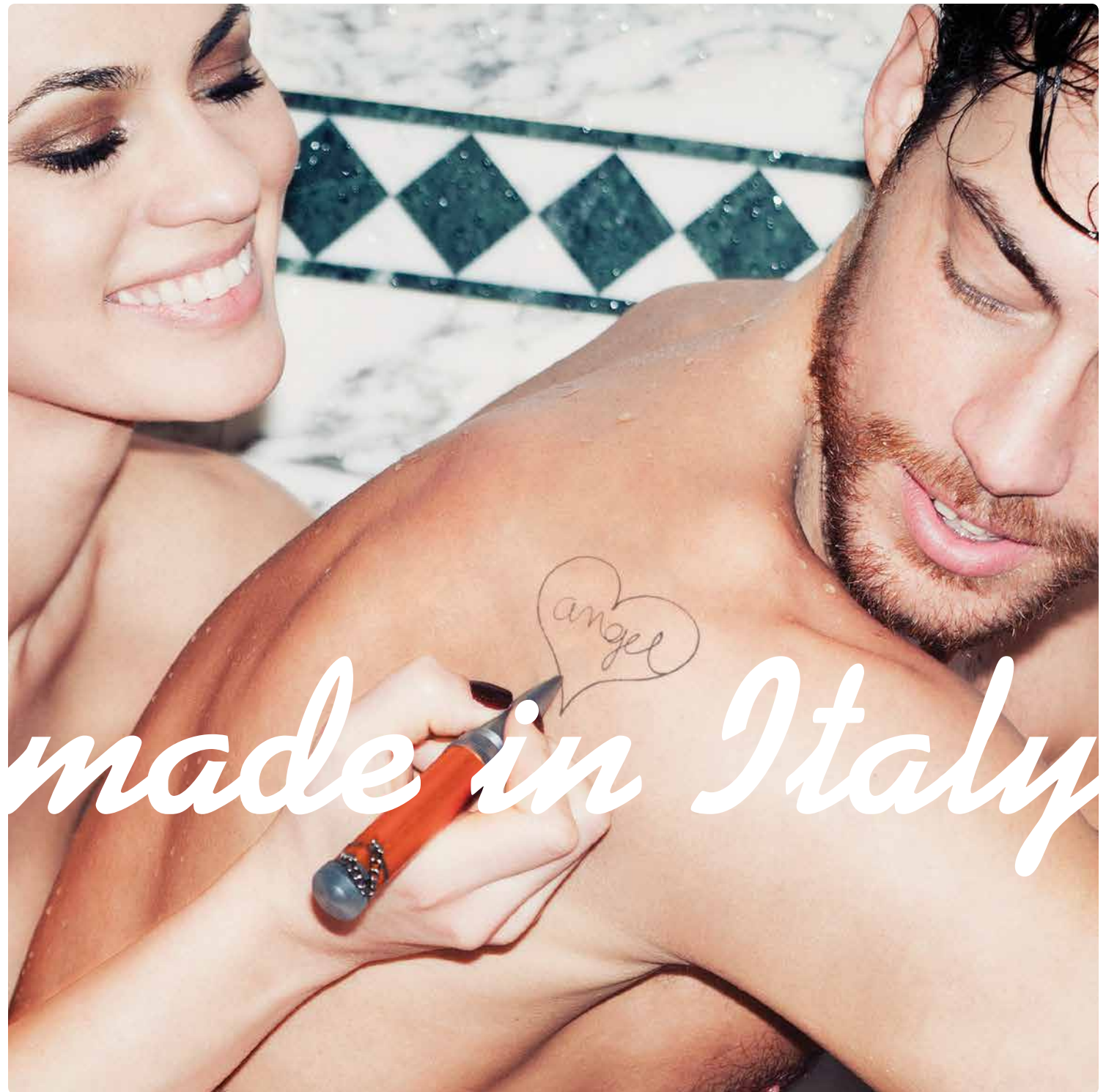
Band: Genuine leather strap with stainless steel buckle

Water Resistance: 500 meters tested

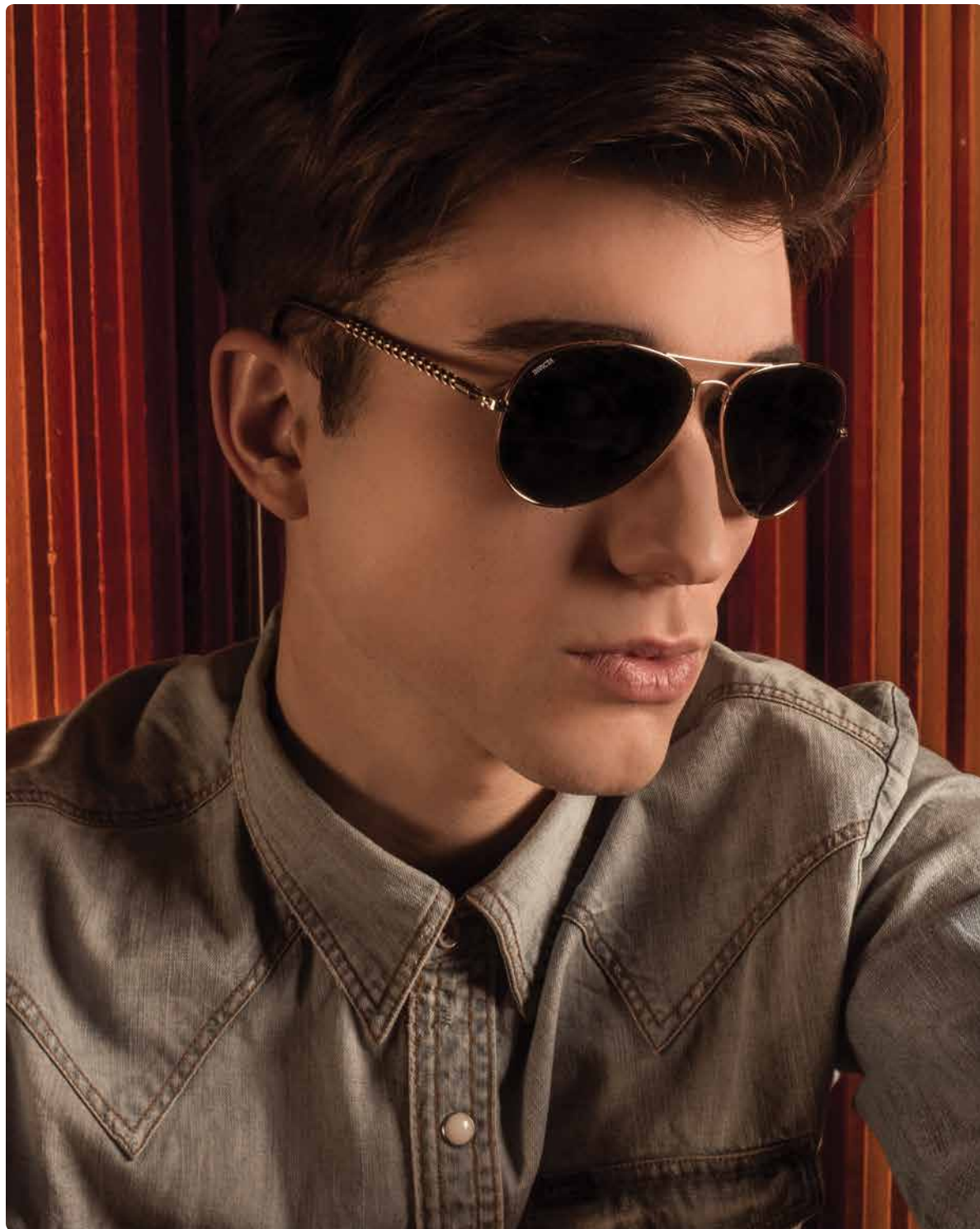


From the very foundation of the Invicta watch collections, the Invicta Writing Instruments emerge. Aspects of each Invicta collection are now interpreted into distinct and stylish pens. Appointed with the same key design elements and materials, these writing instruments compliment the watch collection it was inspired by, providing a fashionable touch to the everyday routine. Extending innovation and leaving a lasting impression, the spirit of Invicta is now at your fingertips.

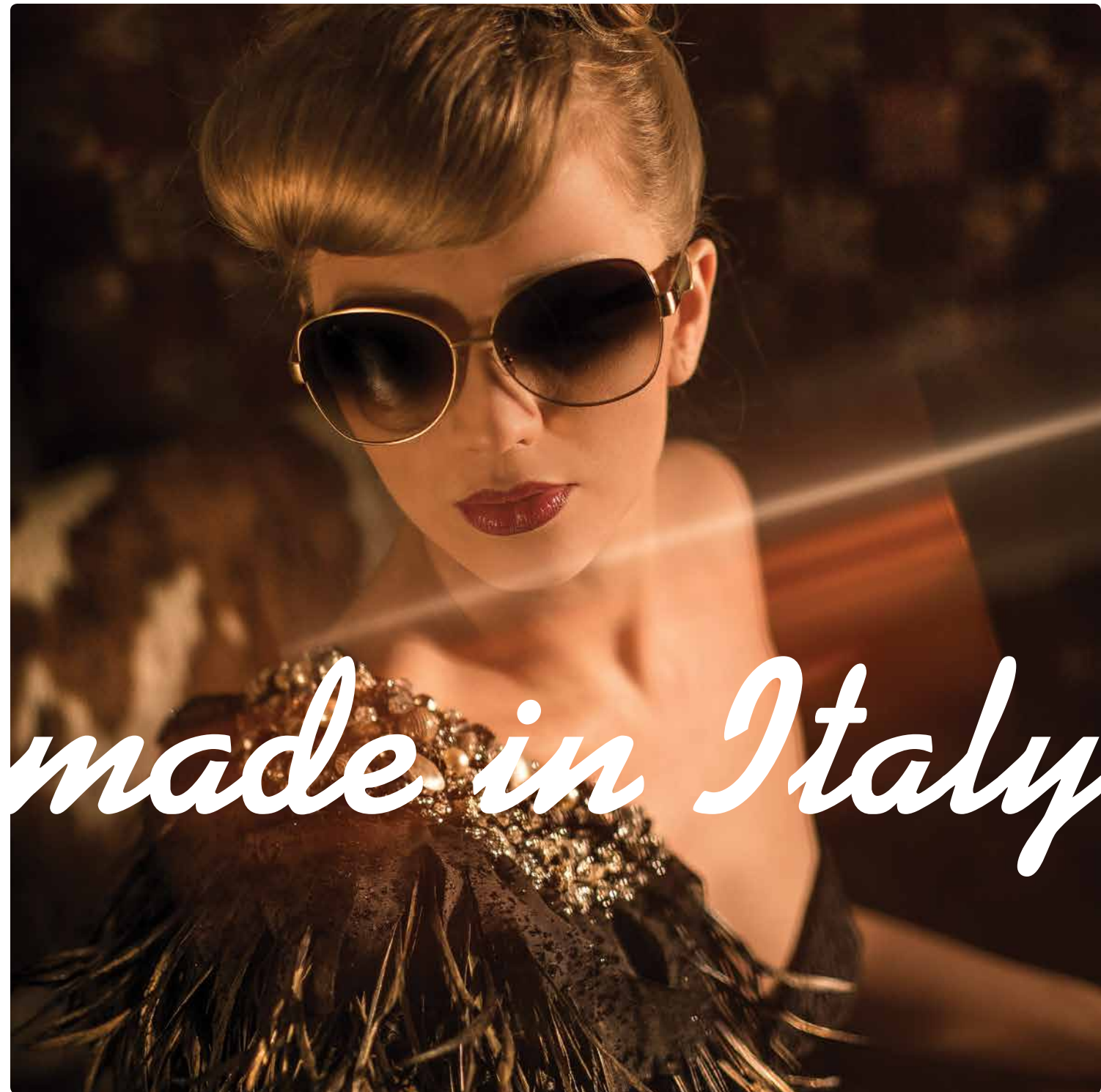
INVICTA
WRITING
INSTRUMENTS
MADE IN ITALY



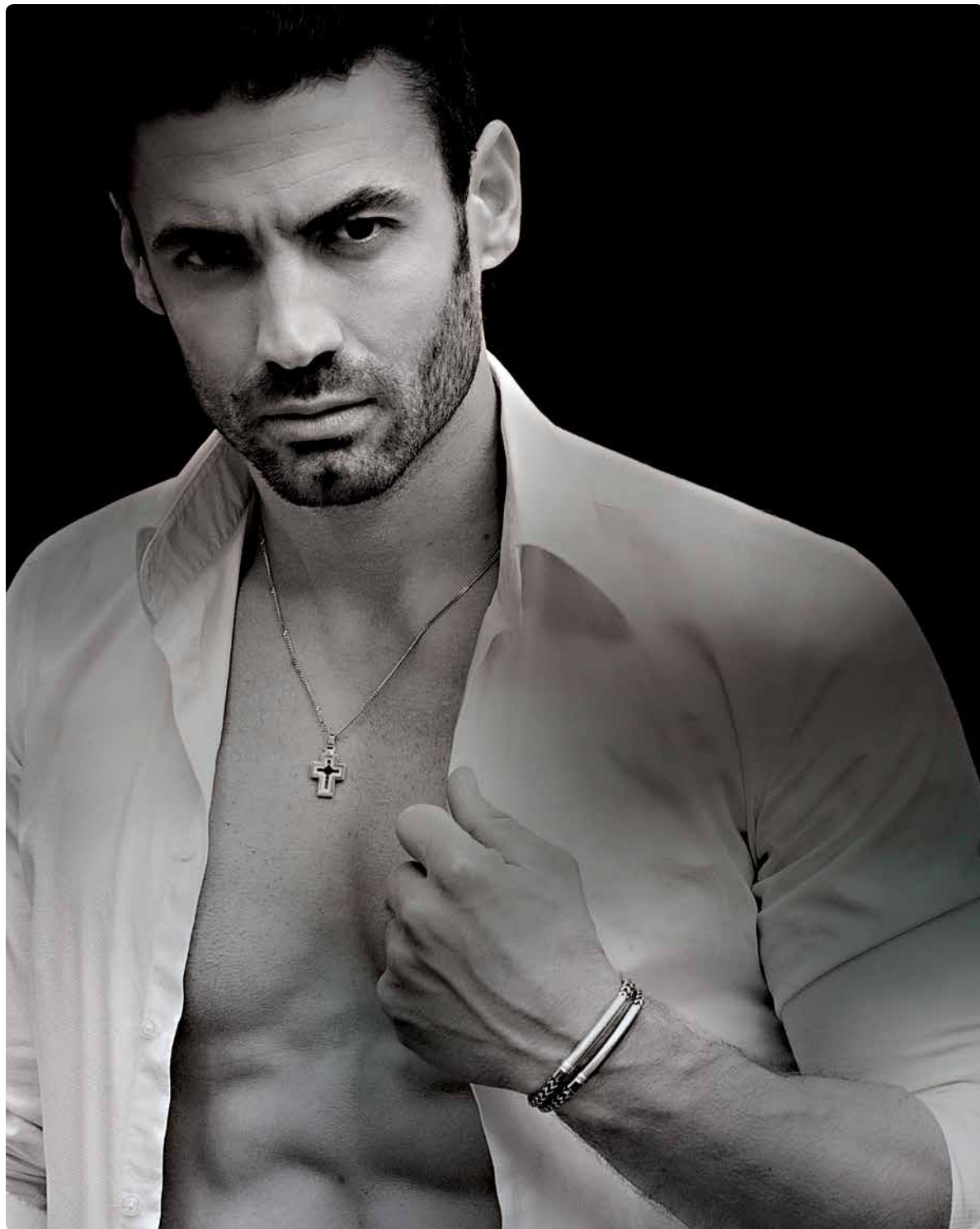
made in Italy



Taking cues from our watch collections, Invicta Eyewear translates those notable qualities into stylish and sophisticated Italian made sunglasses. Designed and made in Italy with an innovative use of remarkable materials, the many styles of Invicta Eyewear elegantly capture the very essence of Invicta. Transform your vision and frame the day with Invicta Eyewear.



made in Italy



Invicta Jewelry Made in Italy transforms the everyday into an assortment of artful variations. The intricate craftsmanship captures the nuance and refined nature of a distant land. The detailed pieces embody a complexity of form and structure, making Invicta Jewelry stunning as well as versatile. Rich compositions add a touch of luxury perfectly tuned to accessorize life's occasions.

INVICTA
JEWELRY
MADE IN ITALY



With such a spectacular burst onto the scene, The Invicta Watch Group sparked a movement turning the balance of power within the watch industry. Utilizing high-quality materials, generally found only in high-priced brands, Invicta generated tremendous intrigue winning over enthusiasts and retailers while confounding competitors. From skeletonized movements to a unique gold layering technique to exceptional construction, Invicta has become one of the most technically capable watchmakers in the world.

What began with the bold Lupah has grown to encompass a range of models so diverse they demanded their own identities! Today the watches comprise 30 distinctive, compelling collections. The Invicta Pro Diver has rightly garnered a cult like status and favorites such as the Corduba, Russian Diver and Force to name but a few, continue to dominate the market with incomparable daring and mastery.

Over the past several years, the Invicta Reserve collection has upped the ante for those discerning, dedicated collectors. These timepieces brightly shine and are appreciated in the finest of jewelry houses across many lands and oceans. The expert ability in creating luxury watches not only solidifies the absolute perfection of Invicta's craft but has also cemented Invicta's place within every facet of watch making.



daring mastery



In re-inventing its past to accommodate the present, The Invicta Watch Group proudly offers one of the most vividly dynamic and accomplished collections on the market. And with each new introduction, Invicta proves time and again that you don't have to be privileged to enjoy the privilege of caliber and standards.

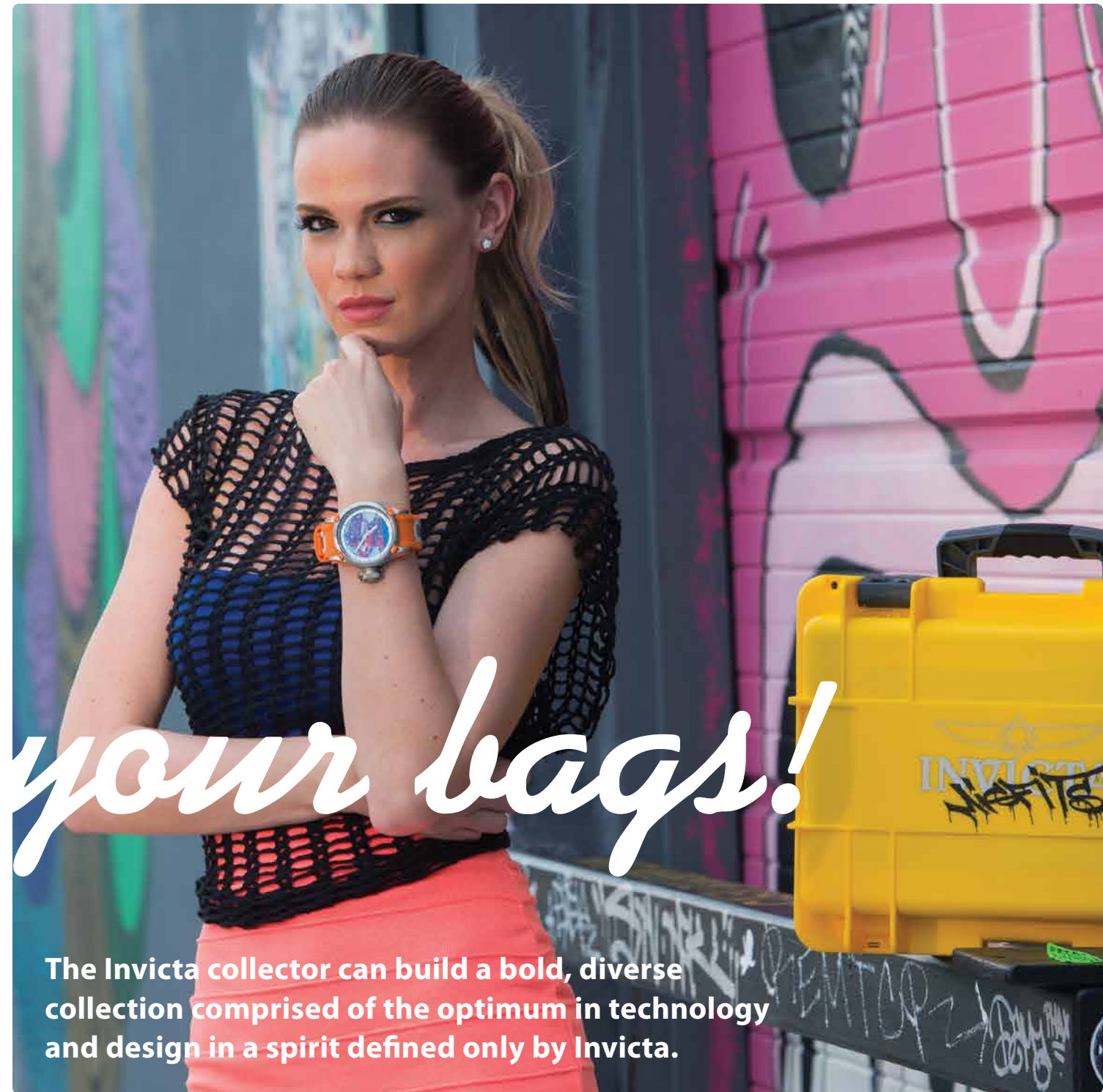


A journey of un-imagined substance and innovation awaits the Invicta watch collector. With over 20 collections from which to select, the world of Invicta delivers the ultimate in technical achievement along with a diversity in style unmatched in today's market. Cutting-edge craftsmanship expressed through ingenious designs has seamlessly turned fans into dedicated collectors.



pack your bags!

Always on a mission to advance and perfect, Invicta continually pushes past barriers delivering watches that have made Invicta the masters of case complications and a dream come true for the collector. The engineering and design elements that go into each case must integrate flawlessly with the movement powering the watch that is inside that case. In essence, the more complications, the more difficult it is to design and assemble a timepiece but Invicta has taken this art to a masterful level bringing forth timepieces of inspired exception. The expert, hands-on, detailed approach to watch-making is an intrinsic aspect to the range of capability and case complication demonstrated in each Invicta timepiece.



The Invicta collector can build a bold, diverse collection comprised of the optimum in technology and design in a spirit defined only by Invicta.

HOROLOGY 101

A REDUCED VOCABULARY OF HOROLOGY TERMINOLOGY

Horology is the fine art of making timepieces. It's one of the world's classic professions. To fully appreciate this time-honored craft, and the precision instruments it produces, it is essential that every watch connoisseur know a thing or two about timepieces.

Mechanical Watch: A mechanical watch has no battery, yet is more than accurate enough for daily use. In fact, a good mechanical watch is often more accurate over a short period of time than a quartz watch. Mechanical watches are very durable, and often become heirlooms that are handed down from generation to generation.

Automatic Watch: An automatic watch is a mechanical watch that is self-winding. The movement of your wrist and body causes the rotor, (a weight attached to an automatic winding mechanism), to wind up the watch. An automatic watch needs no battery, but will stop if not worn for over a day, or if you have been physically inactive for an extended period of time.

Should this happen, wind the crown ten times clockwise to start the watch and give it some reserve power. Set the time and date and place it on your wrist. It is also recommended that an automatic watch be housed in a watch winder box.

Chronograph: A chronograph is a timepiece that also operates as a stopwatch. It permits the measurement of a desired interval time, and features start/stop/reset functions. An Invicta chronograph can measure time within intervals of 1/60 of a second.

Chronometer: Originally defined as a watch used for navigation, today a Chronometer is thought of as a highly precise piece, rated in different temperatures and positions that has obtained an official rating certificate by the COSC (Côntrôle Officiel Suisse des Chronomètres).

Jewels: Jewels are the ruby stones that a watch's gears turn on to protect the metal parts from grinding together. Most Invicta automatic watches feature a 21 jewel movement.

Bezel: The bezel is the outer ring of the case that holds the crystal in place. Many sport watches feature bezels that rotate to allow divers to safely measure how long they've been under water.

Tritnite®: Tritnite is a luminous material developed by Invicta in Switzerland. It is a high quality product that allows hands and markers covered with it to glow for an extended period of time. When exposed to regular daylight, it will hold its glow for about 20 hours.

Flame Fusion: Synthetic crystals. Flame Fusion is a process utilizing high heat, high pressure and an Aluminum Oxide combination, the mineral (glass) and Sapphire properties are fused together. This unique fusion of the two materials results in the impact resistance of a standard mineral crystal and offers the scratch resistance of the Sapphire.

MB-Microtec: A glass vessel covered with luminous matter on the inner wall; then, filled with tritium gas and sealed airtight. The electrons emitted by the tritium during its disintegration come into contact with the coating which absorbs the energy of the electrons and converts it visible, or cold light.



[invictawatch.com](https://www.invictawatch.com)


INVICTA
Smarter by the Second.




INVICTA
Smarter by the Second.

invictawatch.com

© 2013, Invicta Watch Company of America